



Benham & Reeves

Duckman Tower, Lincoln Plaza, E14

£669 per week, £2,899 per month + fees

 2 Bedrooms  2 Bathrooms  Furnished

A modern 18h floor apartment with concierge service and gym situated in a luxury development in the heart of Canary Wharf Residential area. Within walking distance from Canary Wharf Station (Jubilee Line).

Please [click here](#) for full detail

Property features

Two High-Spec Double Bedrooms | Two Chrome-Effect Bathrooms | Bright Open-Plan Livingroom | Fully Fitted and Equipped Kitchen | Brand New Designer Furnishing | EPC-B | 24-Hours Concierge | Allocated Car Parking | Nearby South Quay DLR | Walking Distance to Canary Wharf Business Hub

For more information about this property,
please call our Property Management branch on

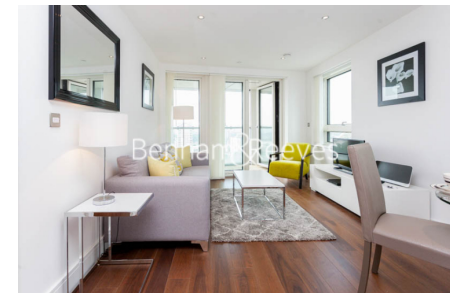
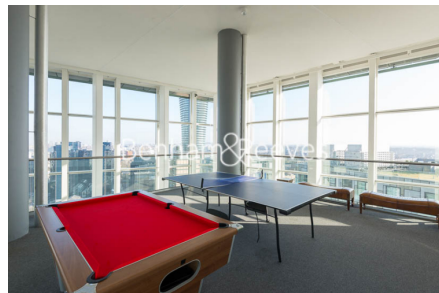
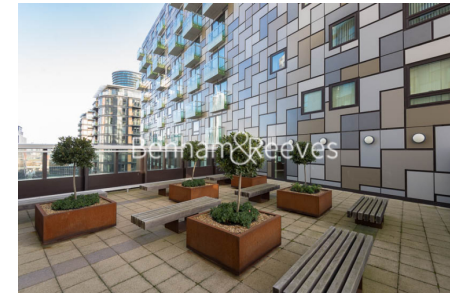
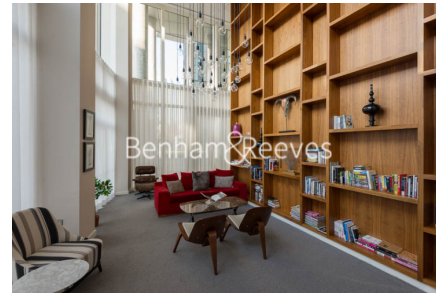
020 7319 9740

Redress & Client Money Protection :

Benham and Reeves are members of The Property Ombudsman redress scheme and have Client Money protection with ARLA Propertymark. You can find more information on our website at <https://www.benhams.com/membership/>



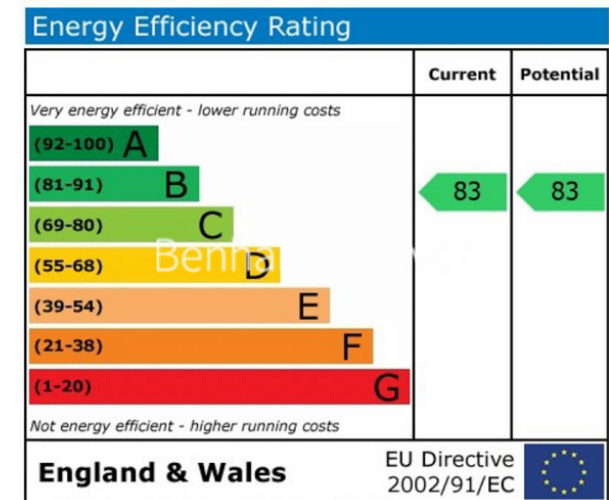
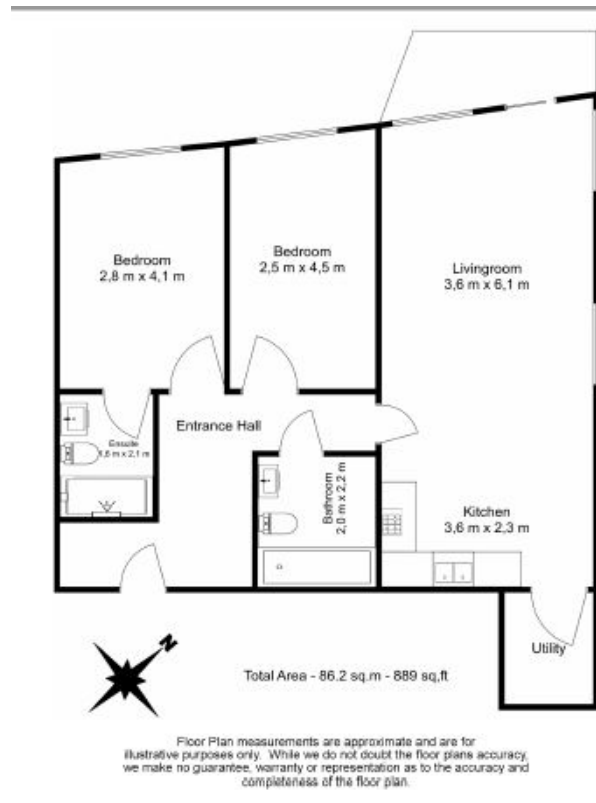
Benham & Reeves



Duckman Tower, Lincoln Plaza, E14

£669 per week, £2,899 per month + fees

www.benhams.com



London branches open six days a week Mon - Sat

Canary Wharf | City | Colindale | Dartmouth Park | Ealing | Fulham
Hammersmith | Hampstead | Highgate | Hyde Park | Kensington | Kew
Knightsbridge | Nine Elms | Shoreditch | Southall | Surrey Quays
Wapping | Wembley | White City | Woolwich

International offices

China | Hong Kong SAR | India | Indonesia | Qatar | Malaysia | Middle East |
Singapore | South Africa | Thailand | Turkey



Benham & Reeves