



Benham & Reeves

Talisman Tower, Lincoln Plaza, E14

£530 per week, £2,297 per month + fees

 1 Bedroom  1 Bathroom  Furnished

Modern furnished apartment set in a luxury development situated in the heart of the Canary Wharf residential area. Located within walking distance from South Quay DLR Rail station. Energy Performance Certificate (EPC) rating B.

Please [click here](#) for full detail

Property features

One Double Bedroom | One Bathroom | Open Planned Living | Furnished | Fitted Kitchen | EPC-B | Benefits from 24 hour Concierge and Residents Gym | 24 Hour Concierge Service, Swimming Pool and Cinema | Moments from Canary Wharf | Nearby South Quay DLR Station

For more information about this property, please call our Canary Wharf branch on

020 8036 3200

Redress & Client Money Protection :

Benham and Reeves are members of The Property Ombudsman redress scheme and have Client Money protection with ARLA Propertymark. You can find more information on our website at <https://www.benhamandreeves.com/membership/>



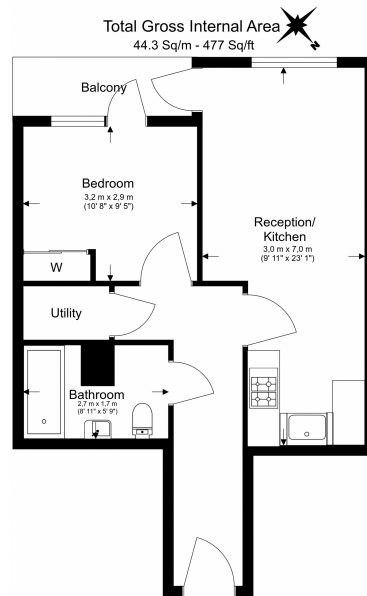
Benham & Reeves



Talisman Tower, Lincoln Plaza, E14

£530 per week, £2,297 per month + fees

www.benhams.com



Floor Plan measurements are approximate and are for illustrative purposes only. While we do not doubt the floor plans accuracy, we make no guarantee, warranty or representation as to the accuracy and completeness of the floor plan.

Score	Energy rating	Current	Potential
92+	A		
81-91	B	83 B	83 B
69-80	C		
55-68	D		
39-54	E		
21-38	F		
1-20	G		

London branches open six days a week Mon - Sat

Canary Wharf | City | Colindale | Dartmouth Park | Ealing | Fulham
Hammersmith | Hampstead | Highgate | Hyde Park | Kensington | Kew
Knightsbridge | Nine Elms | Shoreditch | Southall | Surrey Quays
Wapping | Wembley | White City | Woolwich

International offices

China | Hong Kong SAR | India | Indonesia | Qatar | Malaysia | Middle East | Pakistan
Singapore | South Africa | Thailand | Turkey



Benham & Reeves