



Benham & Reeves

## **Talisman Tower, Lincoln Plaza, E14**

£958 per week, £4,150 per month + fees

🛏 3 Bedrooms    🚿 2 Bathrooms    🛋 Furnished

A spacious 14th floor with Air Conditioning in Principal rooms, Winter gardens, and fantastic views of London, situated in a desirable residential building in with good resident amenities a ten minute walk from Canary Wharf Underground Station.

Please [click here](#) for full detail

## Property features

**Spacious 3bedroom 2bathroom apartment with 937sqft | Spacious lounge with winter garden space | Fully equipped modern fitted open plan kitchen | 3 good sized double bedrooms and 2bathrooms (1 en-suite) | Extra storage space in the utility room | EPC-B | Fantastic view of London from dual aspects windows | Ai-conditioning system for the living room and the bedroom | 24h concierge, gym, swimming pool, and residents lounge | Only 10 mins walk to Canary Wharf underground station**

For more information about this property,  
please call our Canary Wharf branch on

**020 8036 3200**

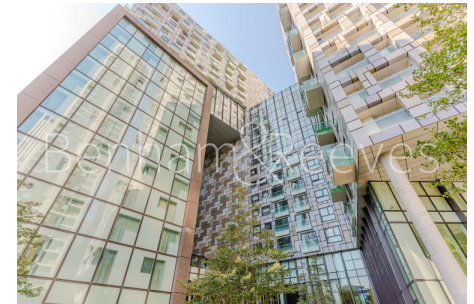
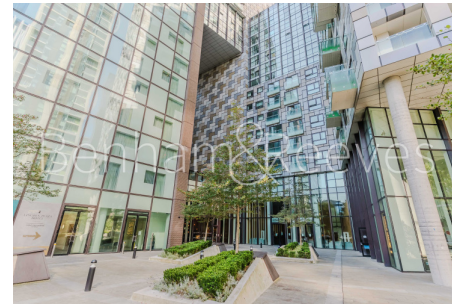
Redress & Client Money Protection :

Benham and Reeves are members of The Property Ombudsman redress scheme and have Client Money protection with ARLA Propertymark. You can find more information on our website at <https://www.benhamandreeves.com/membership/>



**Benham & Reeves**

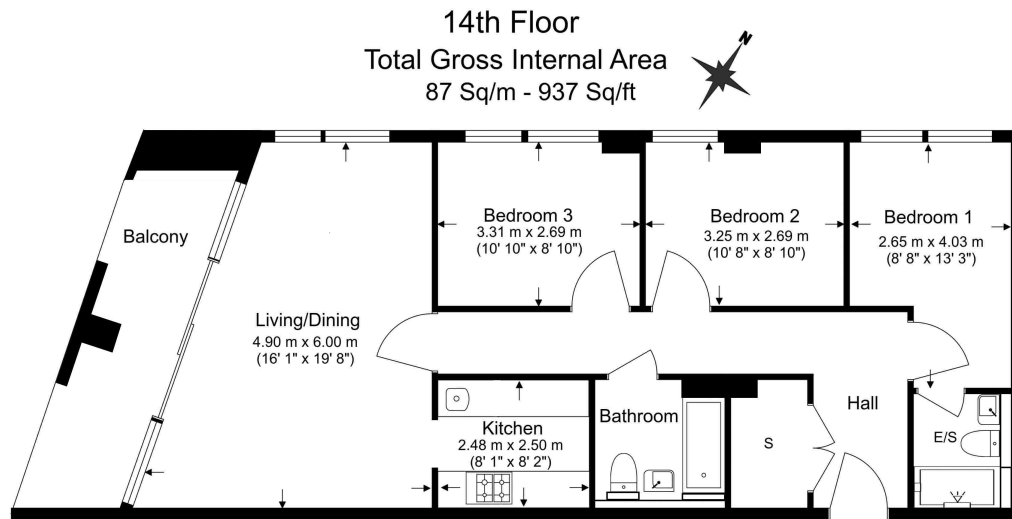




# Talisman Tower, Lincoln Plaza, E14

£958 per week, £4,150 per month + fees

www.benhams.com



Benham & Reeves

Floor Plan measurements are approximate and are for illustrative purposes only. While we do not doubt the floor plans accuracy, we make no guarantee, warranty or representation as to the accuracy and completeness of the floor plan.

| Score | Energy rating | Current | Potential |
|-------|---------------|---------|-----------|
| 92+   | A             |         |           |
| 81-91 | B             | 84 B    | 84 B      |
| 69-80 | C             |         |           |
| 55-68 | D             |         |           |
| 39-54 | E             |         |           |
| 21-38 | F             |         |           |
| 1-20  | G             |         |           |

## London branches open six days a week Mon - Sat

Canary Wharf | City | Colindale | Dartmouth Park | Ealing | Fulham  
Hammersmith | Hampstead | Highgate | Hyde Park | Kensington | Kew  
Knightsbridge | Nine Elms | Shoreditch | Southall | Surrey Quays  
Wapping | Wembley | White City | Woolwich

## International offices

China | Hong Kong SAR | India | Indonesia | Qatar | Malaysia | Middle East | Pakistan  
Singapore | South Africa | Thailand | Turkey



Benham & Reeves