



Benham & Reeves

Lookout Lane, London City Island, E14

£727 per week, £3,150 per month + fees

🛏️ 2 Bedrooms 🚿 2 Bathrooms 🛋️ Furnished

Modern spacious apartment with optional parking and panoramic views from the private balcony, situated within a highly popular development in Canning Town, E14, close to Canary Wharf. Conveniently located within walking distance from Canning Town Underground and DLR station (Jubilee line). EPC-B

Please [click here](#) for full detail

Property features

Two Double Bedrooms | Open-Plan Reception | Fitted Kitchen, Including Dishwasher | Two Bathrooms | Furnished | EPC-B | Private Balcony | Residents Gym and Outdoor Heated Swimming Pool | Parking Available (by Separate Negotiation) | Nearby Canning Town Underground and DLR Station

For more information about this property,
please call our Canary Wharf branch on

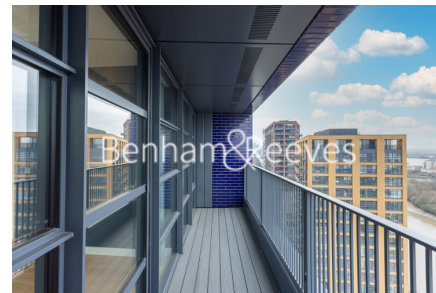
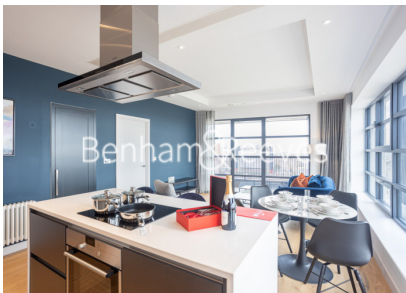
020 8036 3200

Redress & Client Money Protection :

Benham and Reeves are members of The Property Ombudsman redress scheme and have Client Money protection with ARLA Propertymark. You can find more information on our website at <https://www.benhamandreeves.com/membership/>



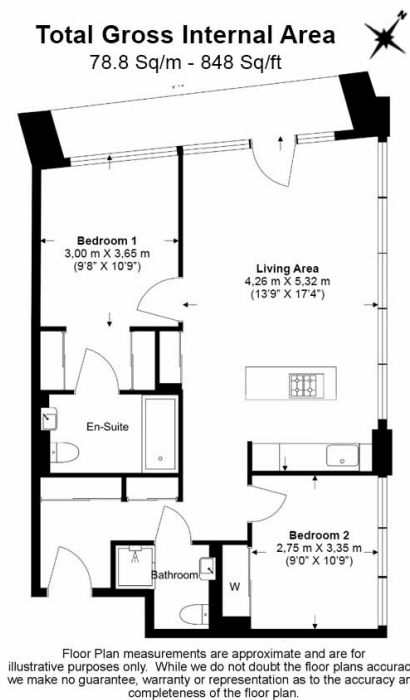
Benham&Reeves



Lookout Lane, London City Island, E14

£727 per week, £3,150 per month + fees

www.benhams.com



Score	Energy rating	Current	Potential
92+	A		
81-91	B	81 B	81 B
69-80	C		
55-68	D		
39-54	E		
21-38	F		
1-20	G		

London branches open six days a week Mon - Sat

Canary Wharf | City | Colindale | Dartmouth Park | Ealing | Fulham
Hammersmith | Hampstead | Highgate | Hyde Park | Kensington | Kew
Knightsbridge | Nine Elms | Shoreditch | Southall | Surrey Quays
Wapping | Wembley | White City | Woolwich

International offices

China | Hong Kong SAR | India | Indonesia | Qatar | Malaysia | Middle East |
Singapore | South Africa | Thailand | Turkey

