



Benham & Reeves

Bermondsey Heights, London, SE15

£588 per week, £2,550 per month + fees

🛏️ 2 Bedrooms 🚿 2 Bathrooms 🛋️ Furnished

Two Bedrooms | Two Bathrooms | Brand New Development | Furnished | EPC-B | Private Balcony | Cycle Storage | Close to South Bermondsey (5 mins to London Bridge), Canada Water & Surrey Quays Stations

Please [click here](#) for full detail

Property features

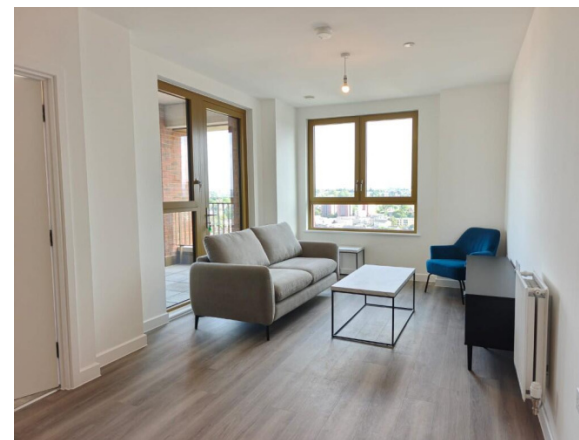
Two Bedrooms | Two Bathrooms | Brand New Development | Furnished | EPC-B | Private Balcony | Secure Cycle Storage | Concierge Service | Two Resident Longes & Two Roof Terraces | Close to South Bermondsey (5 mins to London Bridge), Canada

For more information about this property,
please call our Surrey Quays branch on

020 7740 3050

Redress & Client Money Protection :

Benham and Reeves are members of The Property Ombudsman redress scheme and have Client Money protection with ARLA Propertymark. You can find more information on our website at <https://www.benham.com/membership/>



Benham & Reeves



Bermondsey Heights, London, SE15

£588 per week, £2,550 per month + fees

www.benhams.com

Score	Energy rating	Current	Potential
92+	A		
81-91	B	85 B	85 B
69-80	C		
55-68	D		
39-54	E		
21-38	F		
1-20	G		

London branches open six days a week Mon - Sat

Canary Wharf | City | Colindale | Dartmouth Park | Ealing | Fulham
Hammersmith | Hampstead | Highgate | Hyde Park | Kensington | Kew
Knightsbridge | Nine Elms | Shoreditch | Southall | Surrey Quays
Wapping | Wembley | White City | Woolwich

International offices

China | Hong Kong SAR | India | Indonesia | Qatar | Malaysia | Middle East |
Singapore | South Africa | Thailand | Turkey

