



Benham & Reeves

Skyline Apartments, Makers Yard, E3

£508 per week, £2,201 per month + fees

 1 Bedroom  1 Bathroom  Furnished

Modern apartment, with private onsite Cinema, situated within an impressive development conveniently located nearby the DLR Bromley-by-Bow Tube Station (District and Hammersmith & City Lines).

Please [click here](#) for full detail

Property features

Morden Apartment | Interior Design Furnishing | Bright Open Plan living Room | Furnished | Large Double Bedroom | EPC-B | Family Size Bathroom | Private Balcony | Short Commute To Canary Wharf, Stratford And City of London | Bromley By Bow Underground Station Nearby

For more information about this property,
please call our Canary Wharf branch on

020 8036 3200

Redress & Client Money Protection :

Benham and Reeves are members of The Property Ombudsman redress scheme and have Client Money protection with ARLA Propertymark. You can find more information on our website at <https://www.benhamandreeves.com/membership/>



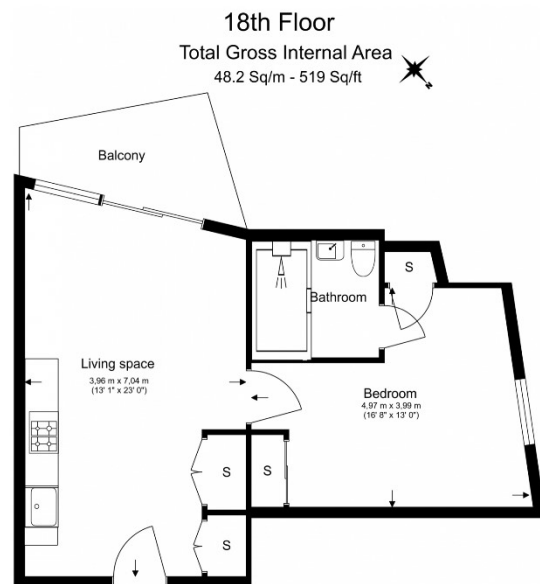
Benham&Reeves



Skyline Apartments, Makers Yard, E3

£508 per week, £2,201 per month + fees

www.benhams.com



Floor Plan measurements are approximate and are for illustrative purposes only. While we do not doubt the floor plans accuracy, we make no guarantee, warranty or representation as to the accuracy and completeness of the floor plan.

Score	Energy rating	Current	Potential
92+	A		
81-91	B	85 B	85 B
69-80	C		
55-68	D		
39-54	E		
21-38	F		
1-20	G		

London branches open six days a week Mon - Sat

Canary Wharf | City | Colindale | Dartmouth Park | Ealing | Fulham
Hammersmith | Hampstead | Highgate | Hyde Park | Kensington | Kew
Knightsbridge | Nine Elms | Shoreditch | Southall | Surrey Quays
Wapping | Wembley | White City | Woolwich

International offices

China | Hong Kong SAR | India | Indonesia | Qatar | Malaysia | Middle East |
Singapore | South Africa | Thailand | Turkey



Benham & Reeves