



Benham & Reeves

Landmark East, Marsh Wall, E14

£669 per week, £2,899 per month + fees

 2 Bedrooms  2 Bathrooms  Furnished

A modern 26th floor apartment with direct River views, situated in a sought-after Tower development with excellent transport links. Within walking distance from Canary Wharf.

Please [click here](#) for full detail

Property features

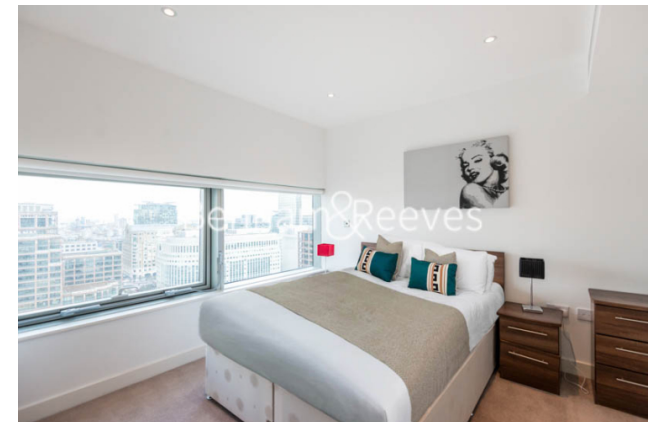
Two Large Double Bedrooms | Two Bathrooms | Bright Open Planned Living | Modern Furnishing | Fitted Kitchen | EPC-B | 24 Hour Concierge | Residence Gym | Striking River Views | Canary Wharf Underground and Heron Quay DLR Stations

For more information about this property,
please call our Canary Wharf branch on

020 8036 3200

Redress & Client Money Protection :

Benham and Reeves are members of The Property Ombudsman redress scheme and have Client Money protection with ARLA Propertymark. You can find more information on our website at <https://www.benhams.com/membership/>



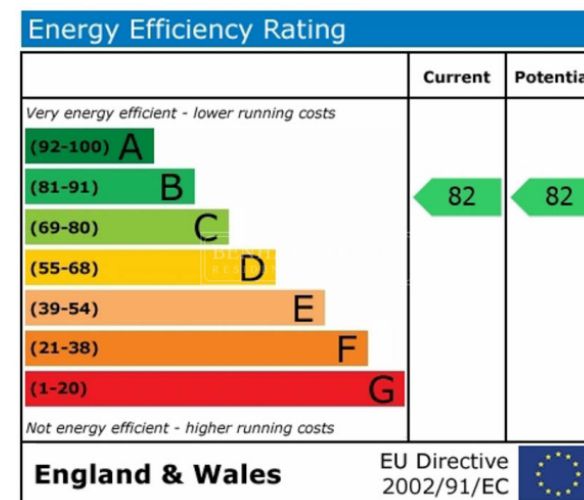
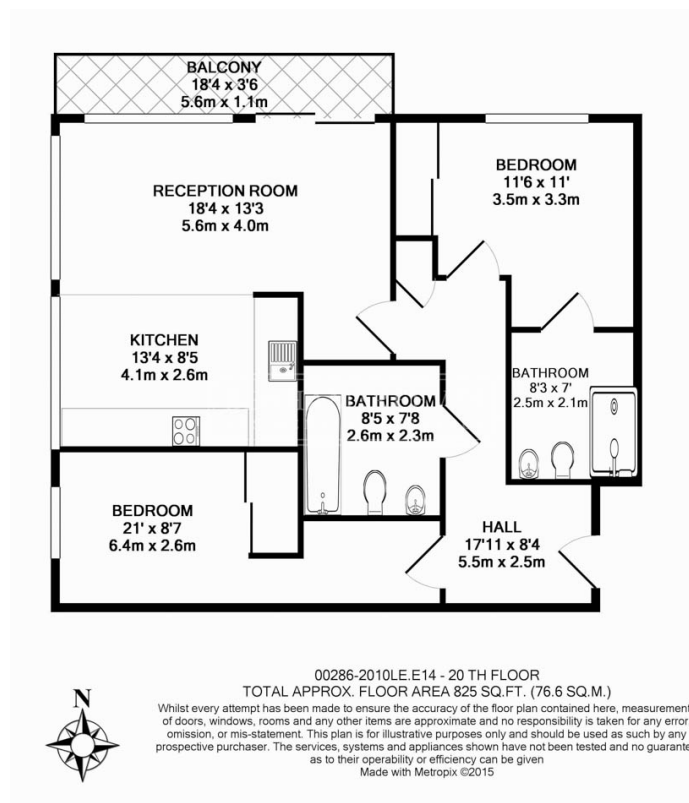
Benham&Reeves



Landmark East, Marsh Wall, E14

£669 per week, £2,899 per month + fees

www.benhams.com



London branches open six days a week Mon - Sat

Canary Wharf | City | Colindale | Dartmouth Park | Ealing | Fulham
Hammersmith | Hampstead | Highgate | Hyde Park | Kensington | Kew
Knightsbridge | Nine Elms | Shoreditch | Southall | Surrey Quays
Wapping | Wembley | White City | Woolwich

International offices

China | Hong Kong SAR | India | Israel | Malaysia | Middle East | Pakistan
Qatar | Singapore | South Africa | Thailand | Turkey



Benham & Reeves