



Benham & Reeves

Ebury Street, Belgravia, SW1W

£1,550 per week, £6,717 per month + fees

 3 Bedrooms  2 Bathrooms  Furnished

An immaculate 1,190 sq ft THREE-BEDROOM apartment featuring wood flooring throughout, as well as a private TERRACE in the highly-regarded 55 EBURY STREET in the heart of BELGRAVIA. This discreetly-positioned building offers lush gardens & is ideally-located within minutes of VICTORIA STATION. Parking included.

Please [click here](#) for full detail

Property features

Prestigious Building | 1,190 SQ FT | Private Terrace | 24 Hr Porter | Private Parking | EPC-C | Prime Belgravia Location | Residents Garden | 2 Minutes To Elizabeth Street & 8 Minutes To Sloane Square | 3 Minutes To Victoria Station

For more information about this property,
please call our Knightsbridge branch on

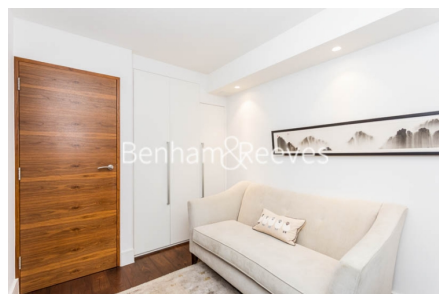
020 7581 2112

Redress & Client Money Protection :

Benham and Reeves are members of The Property Ombudsman redress scheme and have Client Money protection with ARLA Propertymark. You can find more information on our website at <https://www.benhams.com/membership/>



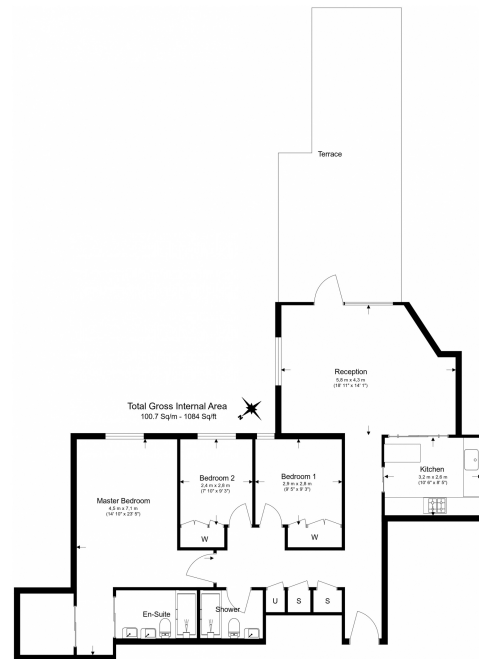
Benham & Reeves



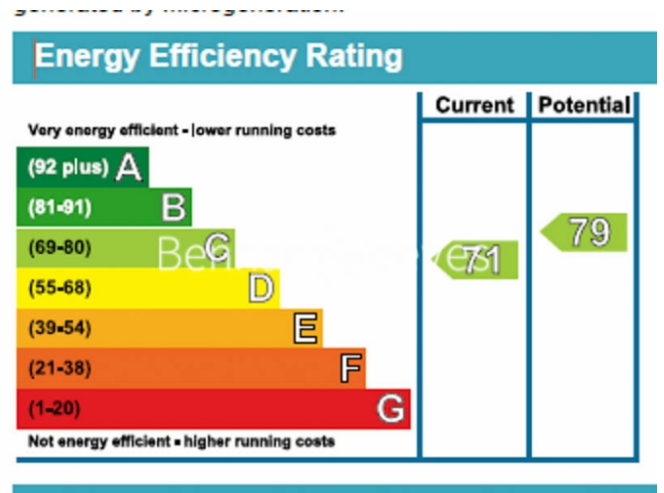
Ebury Street, Belgravia, SW1W

£1,550 per week, £6,717 per month + fees

www.benhams.com



Floor Plan measurements are approximate and are for illustrative purposes only. While we do not doubt the floor plans accuracy we make no guarantee, warranty or representation as to the accuracy and completeness of the floor plan.



London branches open six days a week Mon - Sat

Canary Wharf | City | Colindale | Dartmouth Park | Ealing | Fulham
Hammersmith | Hampstead | Highgate | Hyde Park | Kensington | Kew
Knightsbridge | Nine Elms | Shoreditch | Southall | Surrey Quays
Wapping | Wembley | White City | Woolwich

International offices

China | Hong Kong SAR | India | Israel | Malaysia | Middle East | Pakistan
Qatar | Singapore | South Africa | Thailand | Turkey



Benham & Reeves