



Benham&Reeves

**The Wexner Building, Middlesex Street, Spitalfields,
E1**

£645 per week, £2,795 per month + fees

 2 Bedrooms  1 Bathroom  Furnished

Fully equipped apartment within a warehouse conversion situated on the City borders of Spitalfields. Located seconds from Bishopsgate, Liverpool Street station and a short walk to Shoreditch and Brick Lane.

Please [click here](#) for full detail

Property features

Fully Equipped 2 Bedroom Apartment | Large Reception with Work Office / Study Space | Fitted Semi Open Plan Kitchen with Integrated Appliances | Well Equipped Bedroom | Bespoke Shower Wet Room | EPC-C | Wood Floors, High Ceilings and Large Windows | Warehouse Conversion | Short Walk To The City, Shoreditch & Brick Lane | Moments From Liverpool Street Station

For more information about this property, please call our Wapping branch on

020 7680 8900

Redress & Client Money Protection :

Benham and Reeves are members of The Property Ombudsman redress scheme and have Client Money protection with ARLA Propertymark. You can find more information on our website at <https://www.benhams.com/membership/>



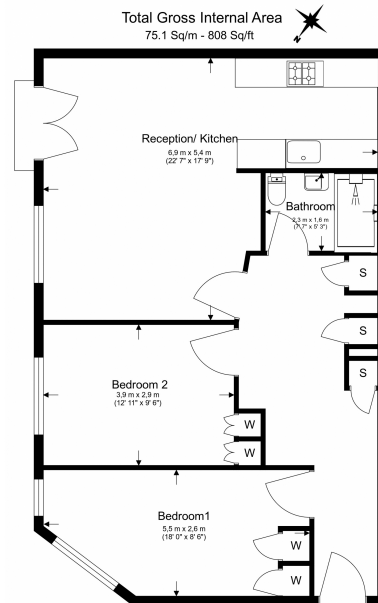
Benham & Reeves



The Wexner Building, Middlesex Street, Spitalfields, E1

£645 per week, £2,795 per month + fees

www.benhams.com



Floor Plan measurements are approximate and are for illustrative purposes only. While we do not doubt the floor plans accuracy, we make no guarantee, warranty or representation as to the accuracy and completeness of the floor plan.

Score	Energy rating	Current	Potential
92+	A		
81-91	B		83 B
69-80	C	80 C	
55-68	D		
39-54	E		
21-38	F		
1-20	G		

London branches open six days a week Mon - Sat

Canary Wharf | City | Colindale | Dartmouth Park | Ealing | Fulham
Hammersmith | Hampstead | Highgate | Hyde Park | Kensington | Kew
Knightsbridge | Nine Elms | Shoreditch | Southall | Surrey Quays
Wapping | Wembley | White City | Woolwich

International offices

China | Hong Kong SAR | India | Indonesia | Qatar | Malaysia | Middle East | Pakistan
Singapore | South Africa | Thailand | Turkey

