



Benham & Reeves

Buttercup apartments, Mill Hill East, NW7

£381 per week, £1,651 per month + fees

 1 Bedroom  1 Bathroom  Furnished

A spacious and bright Ground floor set in a quiet residential block, with secure entrance and underground parking space, located in NW7. Conveniently situated less than a minute walk from Mill Hill East Underground Station.

Please [click here](#) for full detail

Property features

Superb interior design | Fully fitted kitchen | Great Storage | Contemporary design and fittings throughout. | Underground parking | EPC-B | Large private Terrace | Communal gardens | Excellent Transport Links | Nearby Mill Hill East Underground Station

For more information about this property,
please call our Hampstead branch on

020 7435 9681





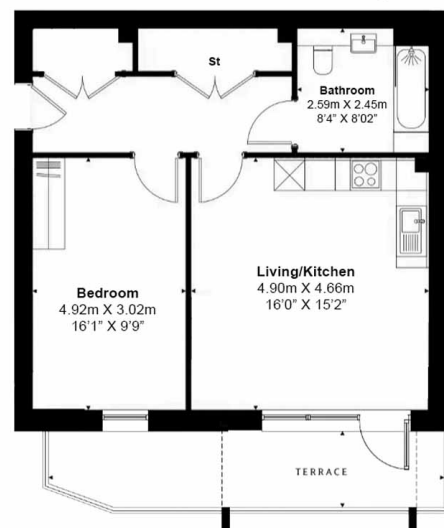
Buttercup apartments, Mill Hill East, NW7

£381 per week, £1,651 per month + fees

www.benhams.com

Total Gross Internal Area

63.93 Sq/m - 688.13 Sq/ft



Floor Plan measurements are approximate and are for illustrative purposes only. While we do not doubt the floor plans accuracy, we make no guarantee, warranty or representation as to the accuracy and completeness of the floor plan.

Score	Energy rating	Current	Potential
92+	A		
81-91	B	83 B	83 B
69-80	C		
55-68	D		
39-54	E		
21-38	F		
1-20	G		

London branches open six days a week Mon - Sat

Canary Wharf | City | Colindale | Dartmouth Park | Ealing | Fulham
Hammersmith | Hampstead | Highgate | Hyde Park | Kensington | Kew
Knightsbridge | Nine Elms | Shoreditch | Southall | Surrey Quays
Wapping | Wembley | White City | Woolwich

International offices

China | Hong Kong SAR | India | Indonesia | Qatar | Malaysia | Middle East |
Singapore | South Africa | Thailand | Turkey



Benham & Reeves