



Benham & Reeves

**North Greenwich, Millenium Gardens, SE10**

£438 per week, £1,900 per month + fees

🛏 1 Bedroom    🚿 1 Bathroom    🛋 Furnished

Contemporary, furnished 8th floor apartment situated in a popular development with its own parkland and thriving Ecology Park. Positioned near to the O2 arena and North Greenwich Underground Station (Jubilee Line).

Please [click here](#) for full detail

## Property features

**Contemporary furnished 1 bed flat located on the 8th floor | Open plan kitchen with integrated kitchen appliances | Private balcony | Concierge service | Easy access to O2 tube station | EPC-B | Spans out overall 590 sqft | Close to amenities | North Greenwich underground station (Jubilee Line).**

For more information about this property,  
please call our Woolwich branch on

**020 8051 0700**

Redress & Client Money Protection :

Benham and Reeves are members of The Property Ombudsman redress scheme and have Client Money protection with ARLA Propertymark. You can find more information on our website at <https://www.benhamandreeves.com/membership/>



Benham & Reeves

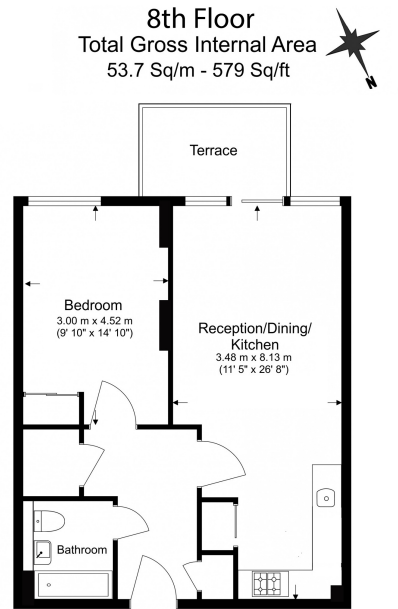




# North Greenwich, Millenium Gardens, SE10

£438 per week, £1,900 per month + fees

www.benhams.com



Benham & Reeves

Floor Plan measurements are approximate and are for illustrative purposes only. While we do not doubt the floor plans accuracy, we make no guarantee, warranty or representation as to the accuracy and completeness of the floor plan.

Score	Energy rating	Current	Potential
92+	A		
81-91	B	83 B	83 B
69-80	C		
55-68	D		
39-54	E		
21-38	F		
1-20	G		

## London branches open six days a week Mon - Sat

Canary Wharf | City | Colindale | Dartmouth Park | Ealing | Fulham  
Hammersmith | Hampstead | Highgate | Hyde Park | Kensington | Kew  
Knightsbridge | Nine Elms | Shoreditch | Southall | Surrey Quays  
Wapping | Wembley | White City | Woolwich

## International offices

China | Hong Kong SAR | India | Indonesia | Qatar | Malaysia | Middle East |  
Singapore | South Africa | Thailand | Turkey



Benham & Reeves