



Benham&Reeves

Lyell Street, Modena Housset, E14

£531 per week, £2,300 per month + fees

 1 Bedroom  1 Bathroom  Furnished

MODERN one double bedroom apartment in Modern House at the HIGHLY ANTICIPATED London City Island development in Canning Town, E14. The apartment features a PRIVATE BALCONY, while residents benefit from 24-HOUR CONCIERGE, GYM, and HEATED OUTDOOR SWIMMING POOL.

Please [click here](#) for full detail

Property features

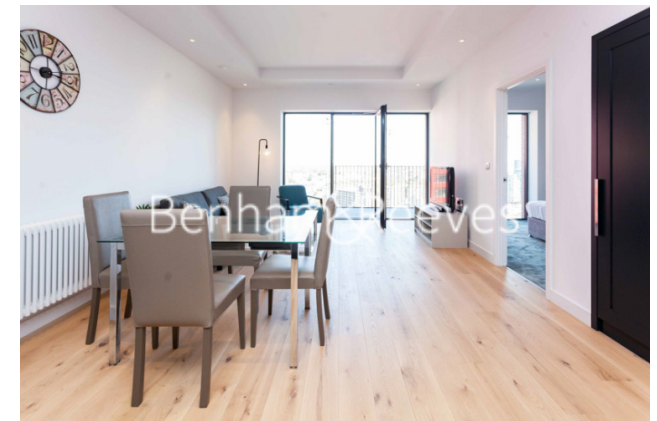
One Double Bedroom | Family Sized Bathroom | Open Planned Living Space | Fitted Kitchen | Fully Furnished | EPC-B | 24-Hour Concierge | Residents Gym | Heated Outdoor Swimming Pool | Nearby Canning Town Station

For more information about this property,
please call our Canary Wharf branch on

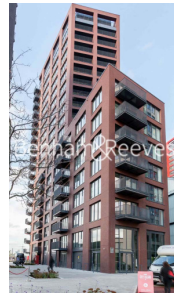
020 8036 3200

Redress & Client Money Protection :

Benham and Reeves are members of The Property Ombudsman redress scheme and have Client Money protection with ARLA Propertymark. You can find more information on our website at <https://www.benhams.com/membership/>



Benham&Reeves



Lyell Street, Modena Housset, E14

£531 per week, £2,300 per month + fees

www.benhams.com

Score	Energy rating	Current	Potential
92+	A		
81-91	B	85 B	85 B
69-80	C		
55-68	D		
39-54	E		
21-38	F		
1-20	G		

London branches open six days a week Mon - Sat

Canary Wharf | City | Colindale | Dartmouth Park | Ealing | Fulham
Hammersmith | Hampstead | Highgate | Hyde Park | Kensington | Kew
Knightsbridge | Nine Elms | Shoreditch | Southall | Surrey Quays
Wapping | Wembley | White City | Woolwich

International offices

China | Hong Kong SAR | India | Indonesia | Qatar | Malaysia | Middle East | Pakistan
Singapore | South Africa | Thailand | Turkey

