



Benham & Reeves

The Heron, Moor Lane, EC2Y

£646 per week, £2,800 per month + fees

🛏 Studio 🚿 1 Bathroom 🛋 Furnished

Smart 15th floor island Studio suite situated in a prestigious residential building a stone's throw away from Moorgate underground and Overground stations.

Please [click here](#) for full detail

Property features

Studio Apartment | Family Size Bathroom | Open Plan Living Space | Fitted Kitchen | Furnished | EPC-C | 24-Hour Concierge | Residents Only Gym, Club & Roof Terrace | Private Balcony | Moorgate Station Nearby

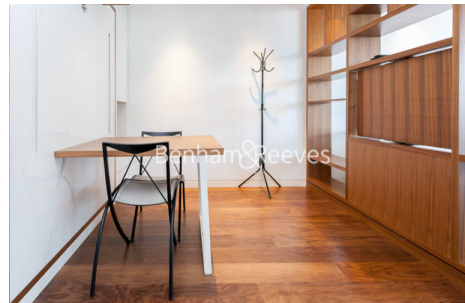
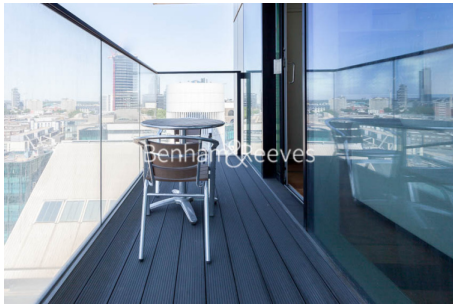
For more information about this property,
please call our City branch on

020 7213 9700



Redress & Client Money Protection :
Benham and Reeves are members of The Property Ombudsman redress scheme and have Client Money protection with ARLA Propertymark.
You can find more information on our website at <https://www.benhamandreeves.com/membership/>

Benham & Reeves

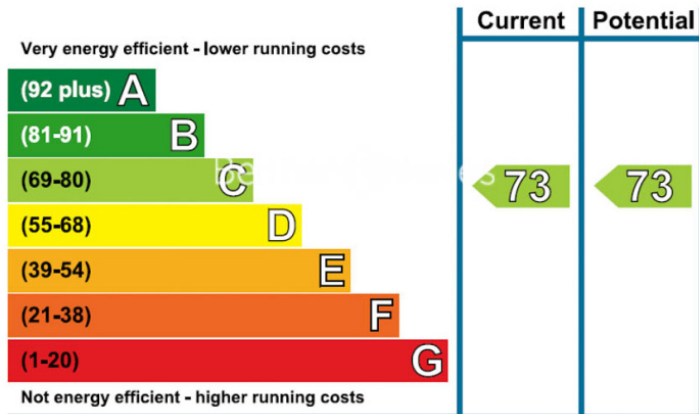


The Heron, Moor Lane, EC2Y

£646 per week, £2,800 per month + fees

www.benhams.com

Energy Efficiency Rating



London branches open six days a week Mon - Sat

Canary Wharf | City | Colindale | Dartmouth Park | Ealing | Fulham
Hammersmith | Hampstead | Highgate | Hyde Park | Kensington | Kew
Knightsbridge | Nine Elms | Shoreditch | Southall | Surrey Quays
Wapping | Wembley | White City | Woolwich

International offices

China | Hong Kong SAR | India | Indonesia | Qatar | Malaysia | Middle East |
Singapore | South Africa | Thailand | Turkey

