



Benham & Reeves

**Casson Square, Southbank Place, SE1**

£692 per week, £3,000 per month + fees

 Studio    1 Bathroom    Furnished

Luxury Studio Apartment located in a desirable development with good resident facilities on the doorstep of Waterloo Station (0.2 miles) and moments from the iconic London Eye.

Please [click here](#) for full detail

## Property features

**Luxury Studio Apartment | Bespoke Family Size Bathroom | Fitted Kitchen | Furnished | Underfloor Heating | EPC-B | 24-Hour Concierge, Residents Gym & Swimming Pool, Spa | Floor to Ceiling Windows | Waterloo Station Nearby**

For more information about this property,  
please call our City branch on

**020 7213 9700**

Redress & Client Money Protection :

Benham and Reeves are members of The Property Ombudsman redress scheme and have Client Money protection with ARLA Propertymark. You can find more information on our website at <https://www.benhams.com/membership/>



Benham & Reeves

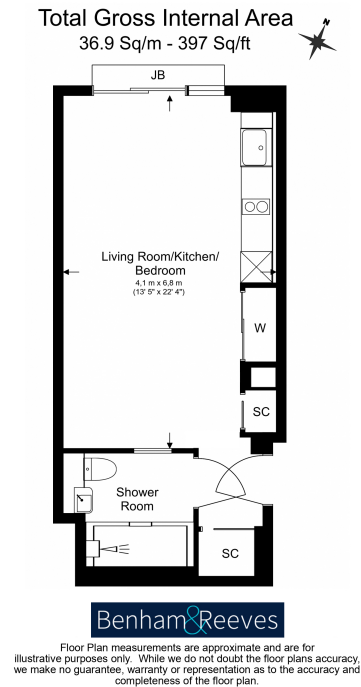




# Casson Square, Southbank Place, SE1

£692 per week, £3,000 per month + fees

[www.benhams.com](http://www.benhams.com)



Score	Energy rating	Current	Potential
92+	A		
81-91	B	84   B	84   B
69-80	C		
55-68	D		
39-54	E		
21-38	F		
1-20	G		

## London branches open six days a week Mon - Sat

Canary Wharf | City | Colindale | Dartmouth Park | Ealing | Fulham  
Hammersmith | Hampstead | Highgate | Hyde Park | Kensington | Kew  
Knightsbridge | Nine Elms | Shoreditch | Southall | Surrey Quays  
Wapping | Wembley | White City | Woolwich

## International offices

China | Hong Kong SAR | India | Indonesia | Qatar | Malaysia | Middle East | Pakistan  
Singapore | South Africa | Thailand | Turkey



Benham & Reeves