



Benham & Reeves

Moor Lane, Moorgate, EC2Y

£1,100 per week, £4,767 per month + fees

 2 Bedrooms  2 Bathrooms  Furnished

Luxury apartment set within a landmark development located in the heart of The City moments from Moorgate station, London Wall and Barbican. Property benefits include home automation features, integrated workspace and superb building amenities.

Please [click here](#) for full detail

Property features

Two Bedroom Apartment | Bespoke Bathroom & En-Suite | Open Plan Kitchen with Integrated Miele Appliances | Furnished | Home Automation Technology Features | EPC-C | 24 Hour Concierge, Residents Gym, Residents Club & Cinema | Utility Room | Minutes From Moorgate, London Wall, Barbican & St Pauls | Nearby Moorgate Barbican and St Pauls station

For more information about this property,
please call our City branch on

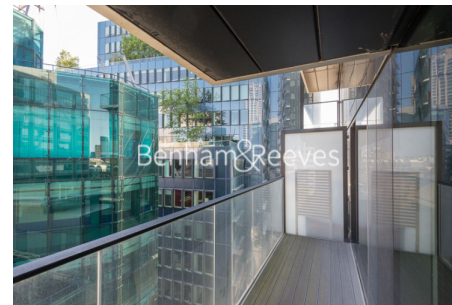
020 7213 9700

Redress & Client Money Protection :

Benham and Reeves are members of The Property Ombudsman redress scheme and have Client Money protection with ARLA Propertymark. You can find more information on our website at <https://www.benhamandreeves.com/membership/>



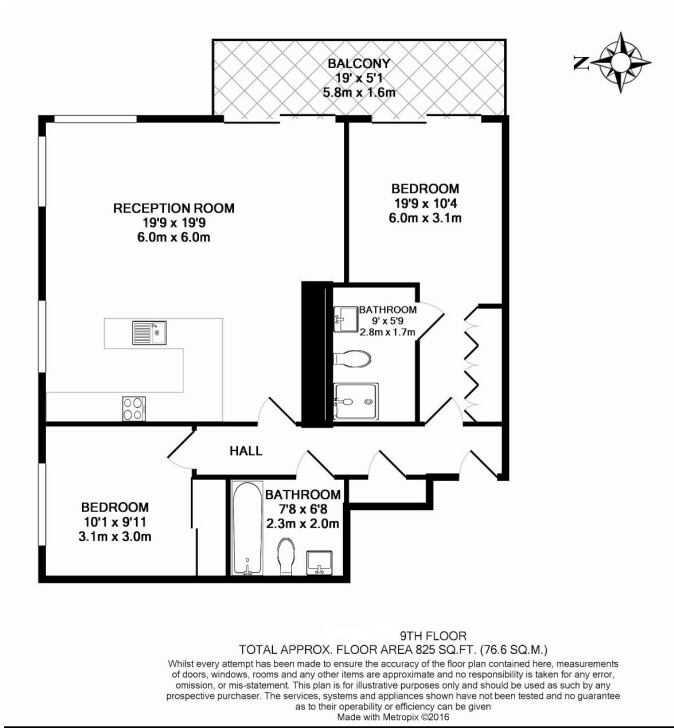
Benham&Reeves



Moor Lane, Moorgate, EC2Y

£1,100 per week, £4,767 per month + fees

www.benhams.com



Score	Energy rating	Current	Potential
92+	A		
81-91	B	82 B	82 B
69-80	C		
55-68	D		
39-54	E		
21-38	F		
1-20	G		

London branches open six days a week Mon - Sat

Canary Wharf | City | Colindale | Dartmouth Park | Ealing | Fulham
Hammersmith | Hampstead | Highgate | Hyde Park | Kensington | Kew
Knightsbridge | Nine Elms | Shoreditch | Southall | Surrey Quays
Wapping | Wembley | White City | Woolwich



International offices

China | Hong Kong SAR | India | Indonesia | Qatar | Malaysia | Middle East | Pakistan
Singapore | South Africa | Thailand | Turkey