



Benham & Reeves

## **Canada Water, Needleman Street, SE16**

£485 per week, £2,100 per month + fees

 1 Bedroom    1 Bathroom    Furnished

Modern top floor apartment situated within a modern development located in Zone 2, Canada Water Station (Jubilee Line). This modern apartment set in Maple Quay, is one of Canada Waters modern developments.

Please [click here](#) for full detail

## Property features

**One Bedroom Apartment | One Bathroom | Integrated Kitchen Appliances | Furnished | Access To Resident Gym | EPC-C | Top Floor Apartment with wrap around balcony | Local Cafes, Bars, Restaurants and Groceries Short Walk Away | 24 Hour Dedicated Concierge | Moments from Canada Water Station (Jubilee & Windrush Line)**

For more information about this property,  
please call our Surrey Quays branch on

**020 7740 3050**

Redress & Client Money Protection :

Benham and Reeves are members of The Property Ombudsman redress scheme and have Client Money protection with ARLA Propertymark. You can find more information on our website at <https://www.benhams.com/membership/>



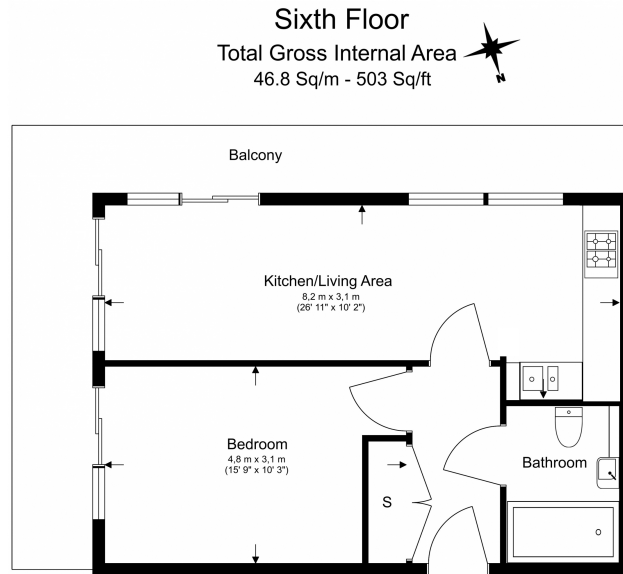
Benham&Reeves



# Canada Water, Needleman Street, SE16

£485 per week, £2,100 per month + fees

www.benhams.com



Floor Plan measurements are approximate and are for illustrative purposes only. While we do not doubt the floor plans accuracy, we make no guarantee, warranty or representation as to the accuracy and completeness of the floor plan.

Score	Energy rating	Current	Potential
92+	A		
81-91	B		
69-80	C	77   c	77   c
55-68	D		
39-54	E		
21-38	F		
1-20	G		

## London branches open six days a week Mon - Sat

Canary Wharf | City | Colindale | Dartmouth Park | Ealing | Fulham  
Hammersmith | Hampstead | Highgate | Hyde Park | Kensington | Kew  
Knightsbridge | Nine Elms | Shoreditch | Southall | Surrey Quays  
Wapping | Wembley | White City | Woolwich

## International offices

China | Hong Kong SAR | India | Indonesia | Qatar | Malaysia | Middle East |  
Singapore | South Africa | Thailand | Turkey



Benham & Reeves