



Benham & Reeves

Gorsuch Place, Shoreditch, E2

£800 per week, £3,467 per month + fees

 2 Bedrooms  2 Bathrooms  Furnished

A beautifully furnished apartment, with excellent resident amenities, situated within an iconic development located in the heart of Shoreditch. Conveniently located minutes (0.01 miles) from Hoxton Station.

Please [click here](#) for full detail

Property features

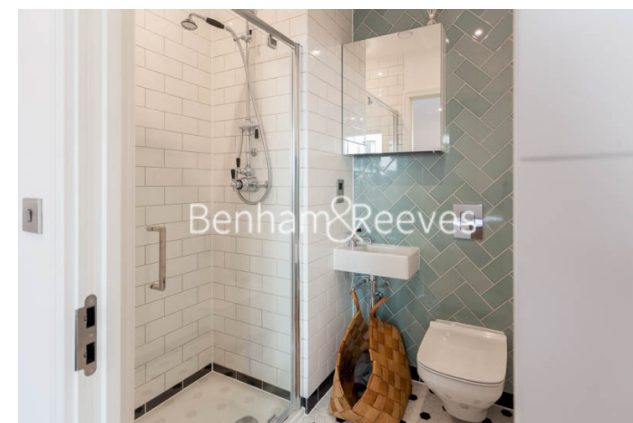
2 bedroom 2 bathroom 866sqft (80.45sqm) | Beautifully furnished with designers furniture | Private balcony with direct access from the living room | Contemporary designer kitchen units featuring soft close doo | Spacious bedrooms with floor to ceiling wardrobe | EPC-B | High quality fitted carpet and underlay in all bedrooms | Beautifully designed contemporary bathroom | 24h concierge, high security system with CCTV camera | Only short walking distance to Shoreditch high street

For more information about this property,
please call our Shoreditch branch on

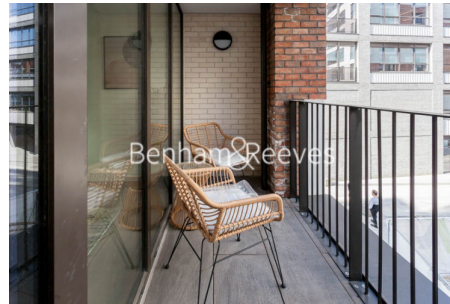
020 3868 5733

Redress & Client Money Protection :

Benham and Reeves are members of The Property Ombudsman redress scheme and have Client Money protection with ARLA Propertymark. You can find more information on our website at <https://www.benhams.com/membership/>



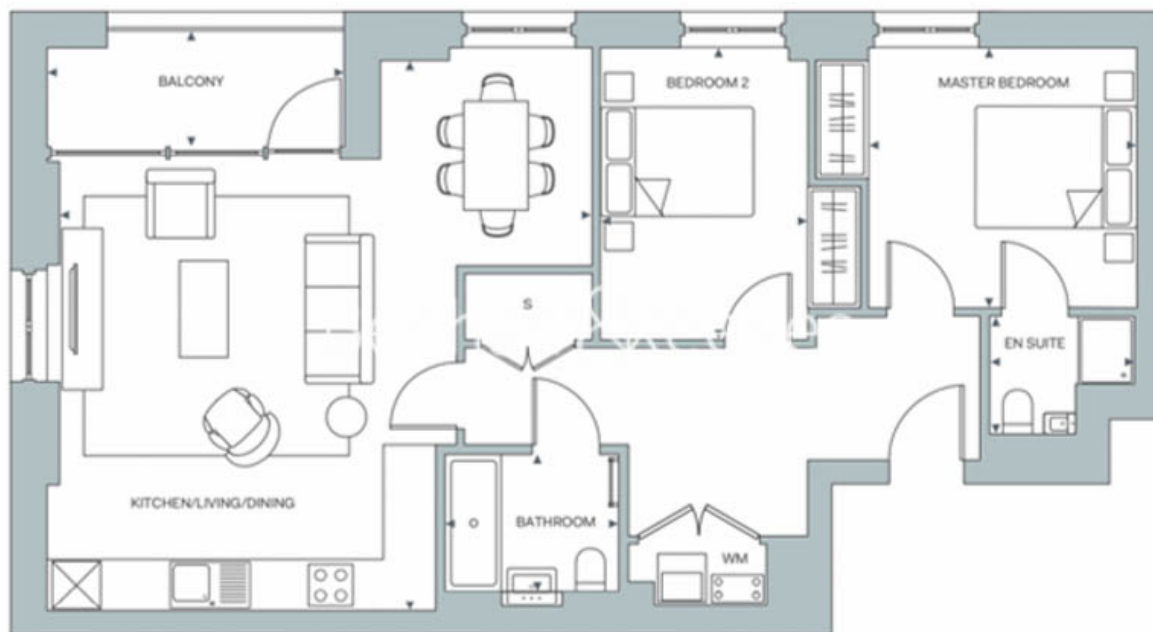
Benham & Reeves



Gorsuch Place, Shoreditch, E2

£800 per week, £3,467 per month + fees

www.benhams.com



Score	Energy rating	Current	Potential
92+	A		
81-91	B	85 B	85 B
69-80	C		
55-68	D		
39-54	E		
21-38	F		
1-20	G		

London branches open six days a week Mon - Sat

Canary Wharf | City | Colindale | Dartmouth Park | Ealing | Fulham
Hammersmith | Hampstead | Highgate | Hyde Park | Kensington | Kew
Knightsbridge | Nine Elms | Shoreditch | Southall | Surrey Quays
Wapping | Wembley | White City | Woolwich

International offices

China | Hong Kong SAR | India | Indonesia | Qatar | Malaysia | Middle East | Pakistan
Singapore | South Africa | Thailand | Turkey



Benham & Reeves