



Benham & Reeves

**Gasholder Place, Nine Elms, SE11**

£600 per week, £2,600 per month + fees

 1 Bedroom    1 Bathroom    Furnished

A brand-new 5th floor apartment situated in the latest phase of a desirable development located a 7-minute walk from Vauxhall and Oval Stations (Victoria and Northern Lines).

Please [click here](#) for full detail

## Property features

**Brand new | One Double bedroom | Open planned living room | Air cooling | Balcony | EPC-B | 24 Hour concierge | Residence gym opening Nov 2023 | Tesco located on site | Vauxhall and Oval Stations**

For more information about this property,  
please call our Nine Elms branch on

**020 3282 3700**

Redress & Client Money Protection :

Benham and Reeves are members of The Property Ombudsman redress scheme and have Client Money protection with ARLA Propertymark. You can find more information on our website at <https://www.benhams.com/membership/>



**Benham & Reeves**

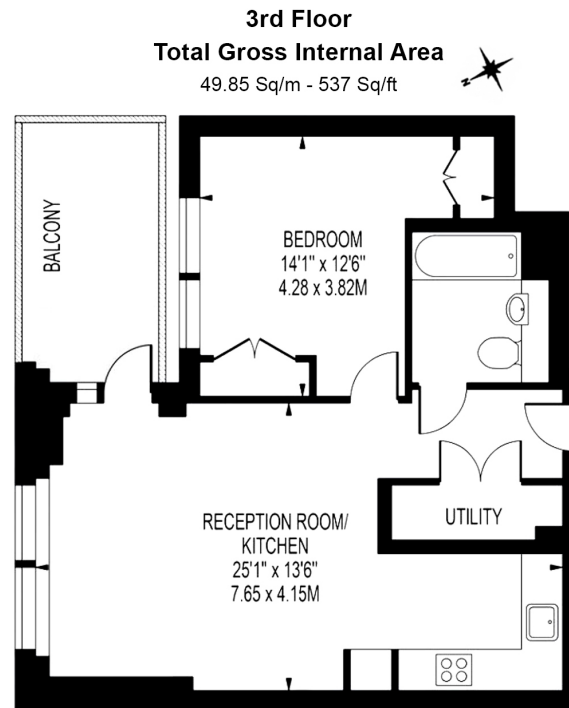




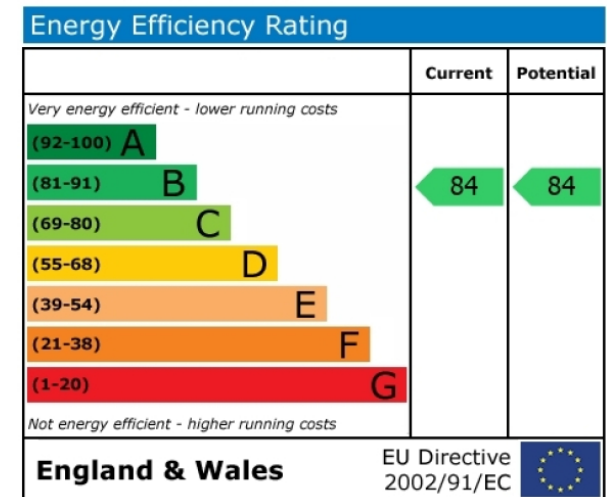
# Gasholder Place, Nine Elms, SE11

£600 per week, £2,600 per month + fees

[www.benhams.com](http://www.benhams.com)



Floor Plan measurements are approximate and are for illustrative purposes only. While we do not doubt the floor plans accuracy, we make no guarantee, warranty or representation as to the accuracy and completeness of the floor plan.



## London branches open six days a week Mon - Sat

Canary Wharf | City | Colindale | Dartmouth Park | Ealing | Fulham  
Hammersmith | Hampstead | Highgate | Hyde Park | Kensington | Kew  
Knightsbridge | Nine Elms | Shoreditch | Southall | Surrey Quays  
Wapping | Wembley | White City | Woolwich

## International offices

China | Hong Kong SAR | India | Indonesia | Qatar | Malaysia | Middle East |  
Singapore | South Africa | Thailand | Turkey



Benham & Reeves