



Benham & Reeves

Aurora Gardens, Nine Elms, SW11

£808 per week, £3,501 per month + fees

 2 Bedrooms  2 Bathrooms  Furnished

Stunning dual aspect apartment, with garden, situated within a sought-after development located on the River Thames, with 5* Health Club, a short walk from Battersea Power Station Underground station.

Please [click here](#) for full detail

Property features

Two double bedrooms | Two bathrooms | Balcony | Separate Kitchen | Garden views | EPC-B | 24 hour concierge | Swimming pool | Gym | Battersea Power Station Tube

For more information about this property,
please call our Nine Elms branch on

020 3282 3700

Redress & Client Money Protection :

Benham and Reeves are members of The Property Ombudsman redress scheme and have Client Money protection with ARLA Propertymark. You can find more information on our website at <https://www.benhams.com/membership/>



Benham & Reeves

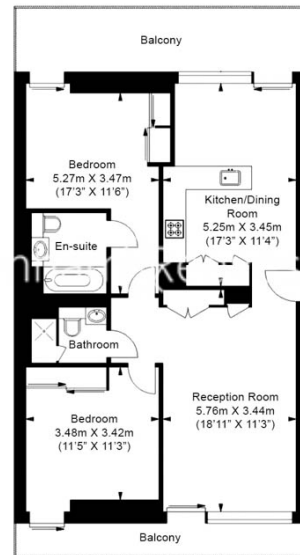


Aurora Gardens, Nine Elms, SW11

£808 per week, £3,501 per month + fees

www.benhams.com

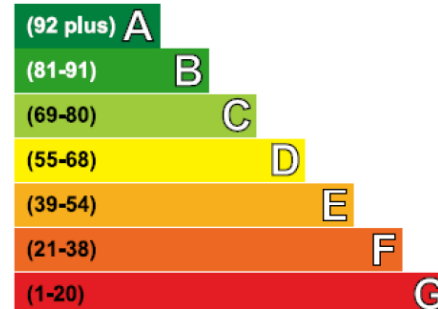
5th Floor
Total Gross Internal Area
76.27 Sq/m - 821 Sq/ft



illustrative purposes only. While we do not doubt the floor plans accuracy, we make no guarantee, warranty or representation as to the accuracy and completeness of the floor plan.

Energy Efficiency Rating

Very energy efficient - lower running costs



Not energy efficient - higher running costs

Current	Potential
80	80

London branches open six days a week Mon - Sat

Canary Wharf | City | Colindale | Dartmouth Park | Ealing | Fulham
Hammersmith | Hampstead | Highgate | Hyde Park | Kensington | Kew
Knightsbridge | Nine Elms | Shoreditch | Southall | Surrey Quays
Wapping | Wembley | White City | Woolwich

International offices

China | Hong Kong SAR | India | Indonesia | Qatar | Malaysia | Middle East |
Singapore | South Africa | Thailand | Turkey



Benham & Reeves