



Benham & Reeves

Queenstown Road, Nine Elms, SW11

£1,442 per week, £6,249 per month + fees

 3 Bedrooms  2 Bathrooms  Furnished

A bright and spacious 7th floor apartment with wraparound balcony offering views towards Battersea Park, located moments from Battersea Park Station.

Please [click here](#) for full detail

Property features

Three double bedrooms | Two bathrooms | Large living space | Large balcony | Battersea Park views | EPC-B | 24 Hour concierge | Gym | Swimming Pool | Battersea Power Station Station

For more information about this property, please call our Nine Elms branch on

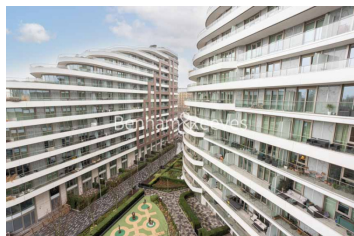
020 3282 3700

Redress & Client Money Protection :

Benham and Reeves are members of The Property Ombudsman redress scheme and have Client Money protection with ARLA Propertymark. You can find more information on our website at <https://www.benhams.com/membership/>



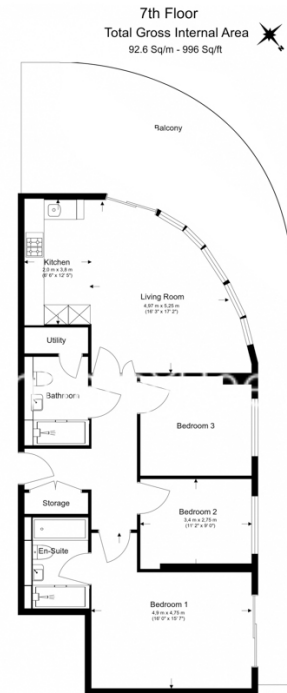
Benham & Reeves



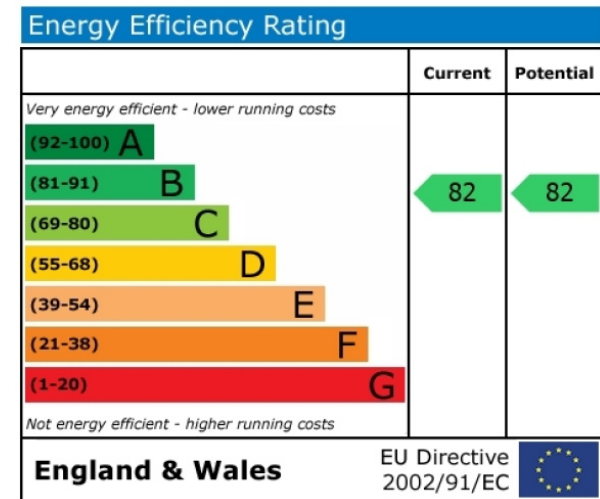
Queenstown Road, Nine Elms, SW11

£1,442 per week, £6,249 per month + fees

www.benhams.com



Floor Plan measurements are approximate and are for illustrative purposes only. While we do not doubt the floor plans accuracy, we make no guarantee, warranty or representation as to the accuracy and completeness of the floor plan.



London branches open six days a week Mon - Sat

Canary Wharf | City | Colindale | Dartmouth Park | Ealing | Fulham
 Hammersmith | Hampstead | Highgate | Hyde Park | Kensington | Kew
 Knightsbridge | Nine Elms | Shoreditch | Southall | Surrey Quays
 Wapping | Wembley | White City | Woolwich

International offices

China | Hong Kong SAR | India | Indonesia | Qatar | Malaysia | Middle East | Pakistan
 Singapore | South Africa | Thailand | Turkey

