



Benham & Reeves

Circus Road West, Nine Elms, SW8

£1,027 per week, £4,450 per month + fees

🛏 2 Bedrooms 🚿 2 Bathrooms 🛋 Furnished

Spacious 14th floor apartment situated within a sought after development located on the River Thames with direct views of Battersea Power Station. Perfectly situated for Battersea Power Station Underground and the Uber Boat Service.

Please [click here](#) for full detail

Property features

14th floor | Two Double bedrooms | Two bathrooms | Winter Garden | Air cooling | EPC-B | 24 hour concierge | Swimming Pool | Power Station views | Nearby Battersea Power Station

For more information about this property,
please call our Nine Elms branch on

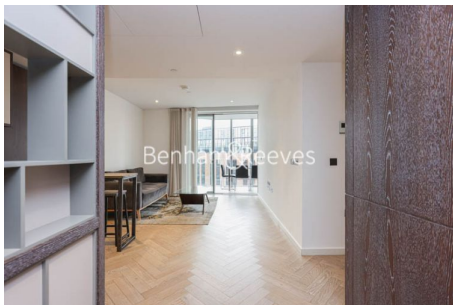
020 3282 3700

Redress & Client Money Protection :

Benham and Reeves are members of The Property Ombudsman redress scheme and have Client Money protection with ARLA Propertymark. You can find more information on our website at <https://www.benhams.com/membership/>



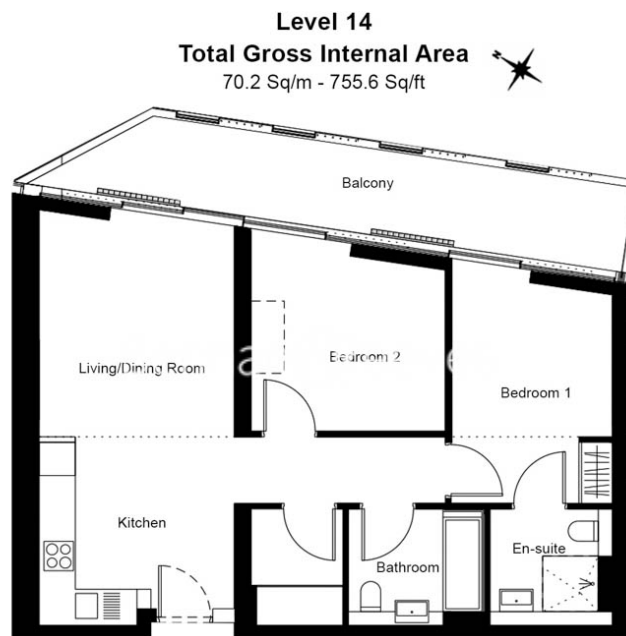
Benham & Reeves



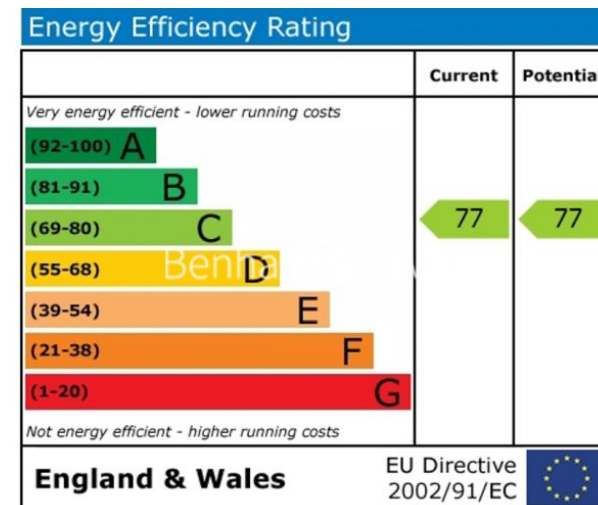
Circus Road West, Nine Elms, SW8

£1,027 per week, £4,450 per month + fees

www.benhams.com



Floor Plan measurements are approximate and are for illustrative purposes only. While we do not doubt the floor plans accuracy, we make no guarantee, warranty or representation as to the accuracy and completeness of the floor plan.



London branches open six days a week Mon - Sat

Canary Wharf | City | Colindale | Dartmouth Park | Ealing | Fulham
Hammersmith | Hampstead | Highgate | Hyde Park | Kensington | Kew
Knightsbridge | Nine Elms | Shoreditch | Southall | Surrey Quays
Wapping | Wembley | White City | Woolwich

International offices

China | Hong Kong SAR | India | Indonesia | Qatar | Malaysia | Middle East |
Singapore | South Africa | Thailand | Turkey



Benham & Reeves