



Benham & Reeves

New Union Square, Nine Elms, SW11

£1,038 per week, £4,498 per month + fees

 2 Bedrooms  2 Bathrooms  Furnished

Large apartment situated in a sought-after development in Nine Elms with five-star facilities and direct River views. Ideally located a short walk from Vauxhall and Nine Elms Stations.

Please [click here](#) for full detail

Property features

Two double bedrooms | Two bathrooms | Open planned living room | Two winter gardens | River views | EPC-B | 24 hour concierge | Swimming Pool | Gym | Nine Elms and Vauxhall Stations

For more information about this property,
please call our Nine Elms branch on

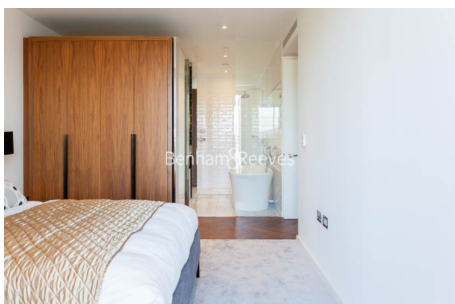
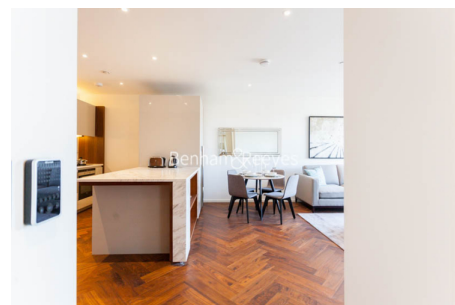
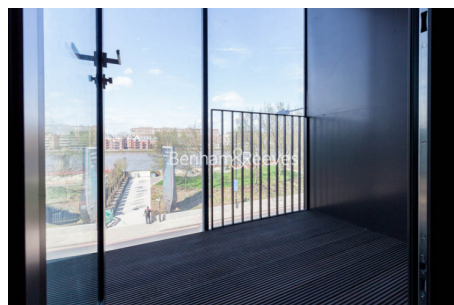
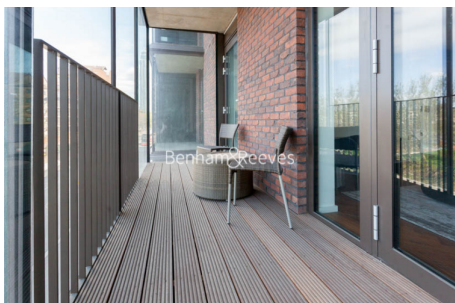
020 3282 3700

Redress & Client Money Protection :

Benham and Reeves are members of The Property Ombudsman redress scheme and have Client Money protection with ARLA Propertymark. You can find more information on our website at <https://www.benhamandreeves.com/membership/>

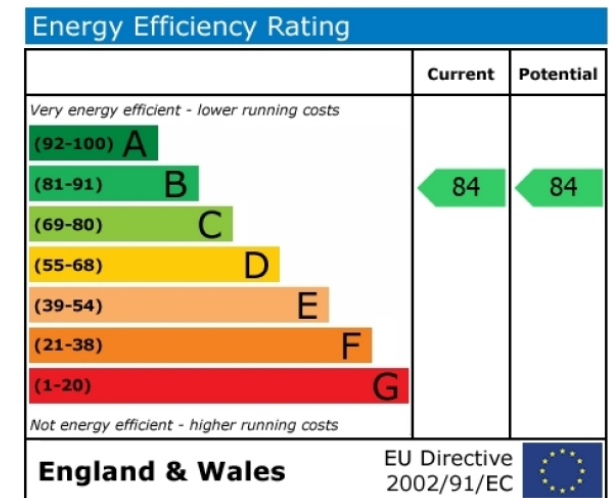
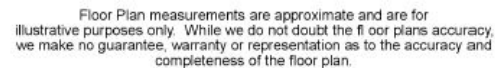


Benham & Reeves



£1,038 per week, £4,498 per month + fees

£1,038 per week, £4,498 per month + fees



Canary Wharf | City | Colindale | Dartmouth Park | Ealing | Fulham
Hammersmith | Hampstead | Highgate | Hyde Park | Kensington | Kew
Knightsbridge | Nine Elms | Shoreditch | Southall | Surrey Quays
Wapping | Wembley | White City | Woolwich



China | Hong Kong SAR | India | Indonesia | Qatar | Malaysia | Middle East |
Singapore | South Africa | Thailand | Turkey

Benham & Reeves