



Benham & Reeves

**Viaduct Gardens, Nine Elms, SW11**

£773 per week, £3,350 per month + fees

 1 Bedroom     1 Bathroom     Furnished

A modern one bedroom apartment located in Embassy Gardens offered on a furnished basis and benefits from 5\* facilities including the famous Sky pool.

Please [click here](#) for full detail

## Property features

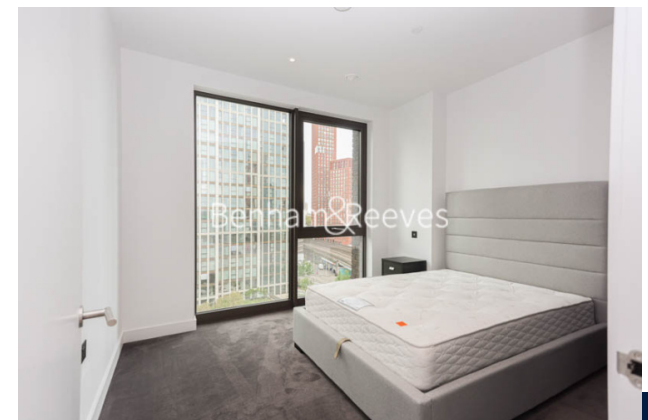
**Furnished | One double bedroom | Balcony | Air cooling | River views | EPC-B | 24 hour concierge | Swimming pool | Gym | Nine Elms and Vauxhall Stations**

For more information about this property,  
please call our Nine Elms branch on

**020 3282 3700**

Redress & Client Money Protection :

Benham and Reeves are members of The Property Ombudsman redress scheme and have Client Money protection with ARLA Propertymark. You can find more information on our website at <https://www.benhams.com/membership/>



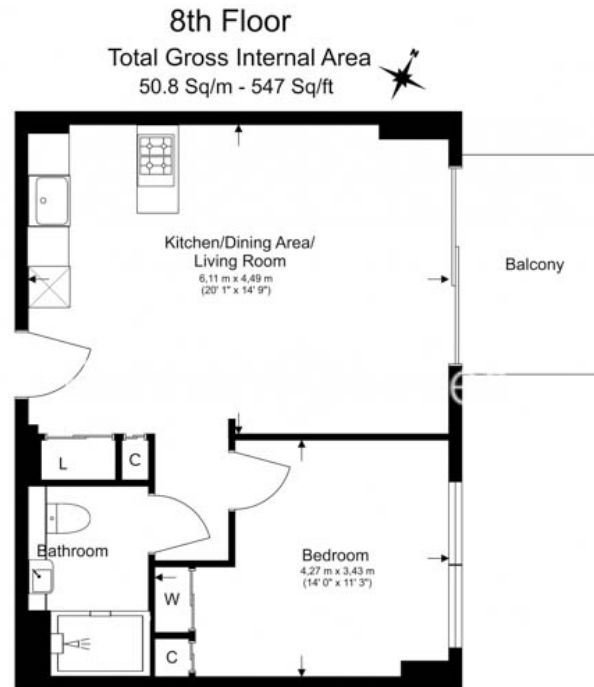
**Benham & Reeves**



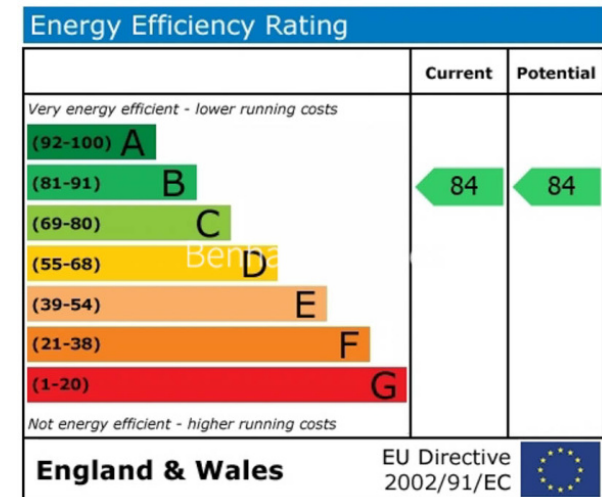
# Viaduct Gardens, Nine Elms, SW11

£773 per week, £3,350 per month + fees

www.benhams.com



Floor Plan measurements are approximate and are for illustrative purposes only. While we do not doubt the floor plans accuracy, we make no guarantee, warranty or representation as to the accuracy and completeness of the floor plan.



## London branches open six days a week Mon - Sat

Canary Wharf | City | Colindale | Dartmouth Park | Ealing | Fulham  
Hammersmith | Hampstead | Highgate | Hyde Park | Kensington | Kew  
Knightsbridge | Nine Elms | Shoreditch | Southall | Surrey Quays  
Wapping | Wembley | White City | Woolwich

## International offices

China | Hong Kong SAR | India | Indonesia | Qatar | Malaysia | Middle East |  
Singapore | South Africa | Thailand | Turkey



Benham & Reeves