



Benham&Reeves

Electric Boulevard, Nine Elms, SW11

£745 per week, £3,228 per month + fees

 1 Bedroom  1 Bathroom  Furnished

7th floor furnished apartment situated in the latest phase of a sought-after development located next to the River Thames and Battersea Park. Battersea Power station tube station is located on site (Northern Line).

Please [click here](#) for full detail

Property features

One double bedroom | Winter Garden | Air cooling | Dishwasher | Furnished | EPC-B | 24 hour concierge | Gym | Residence Lounge | Battersea Power Station

For more information about this property,
please call our Nine Elms branch on

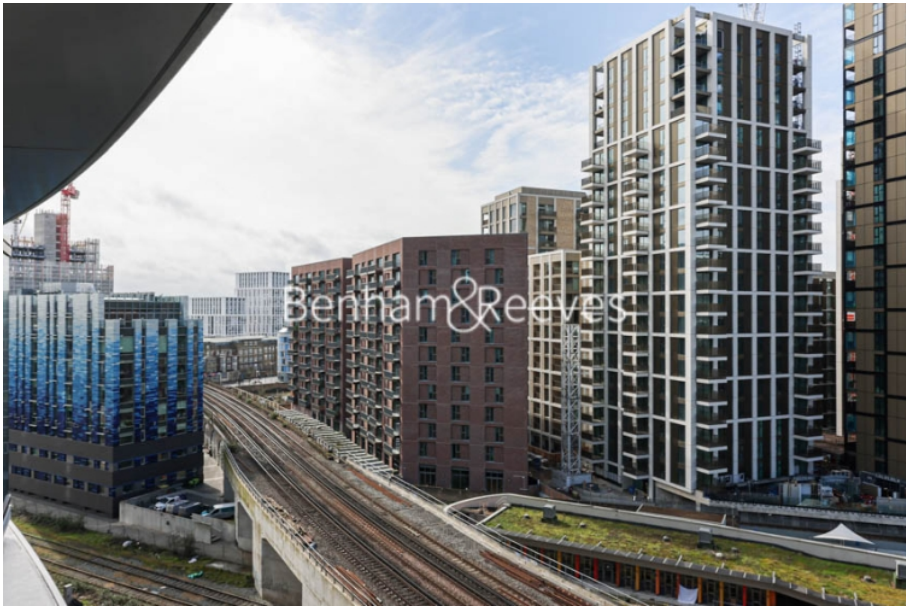
020 3282 3700



Redress & Client Money Protection :

Benham and Reeves are members of The Property Ombudsman redress scheme and have Client Money protection with ARLA Propertymark. You can find more information on our website at <https://www.benhams.com/membership/>

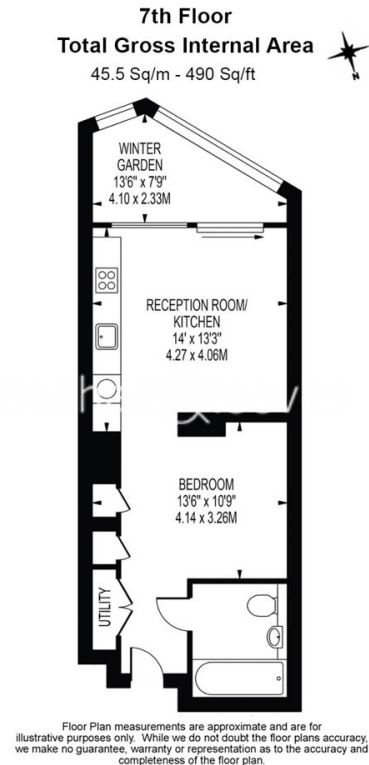
Benham & Reeves



Electric Boulevard, Nine Elms, SW11

£745 per week, £3,228 per month + fees

www.benhams.com



London branches open six days a week Mon - Sat

Canary Wharf | City | Colindale | Dartmouth Park | Ealing | Fulham
Hammersmith | Hampstead | Highgate | Hyde Park | Kensington | Kew
Knightsbridge | Nine Elms | Shoreditch | Southall | Surrey Quays
Wapping | Wembley | White City | Woolwich

International offices

China | Hong Kong SAR | India | Indonesia | Qatar | Malaysia | Middle East | Pakistan
Singapore | South Africa | Thailand | Turkey



Benham & Reeves