



Benham & Reeves

Charles Clowes Walk, Nine Elms, SW11

£750 per week, £3,250 per month + fees

 2 Bedrooms  2 Bathrooms  Furnished

A large apartment situated in a sought-after development in Nine Elms, with residents' gym and 24-hour concierge. Ideally located for links into the City via Waterloo, Central London, Victoria, and the West End.

Please [click here](#) for full detail

Property features

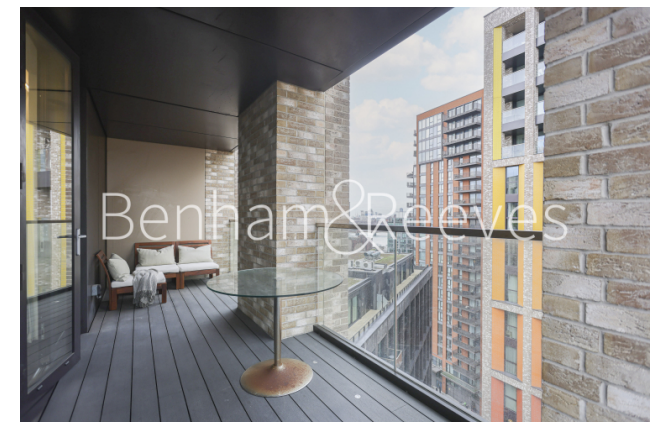
Two Double Bedroom | Two Bathrooms | Open planned living | Balcony | Dishwasher | EPC-B | 24 hour concierge | Gym | Business suite | Nine Elms Tube station

For more information about this property, please call our Nine Elms branch on

020 3282 3700

Redress & Client Money Protection :

Benham and Reeves are members of The Property Ombudsman redress scheme and have Client Money protection with ARLA Propertymark. You can find more information on our website at <https://www.benhams.com/membership/>



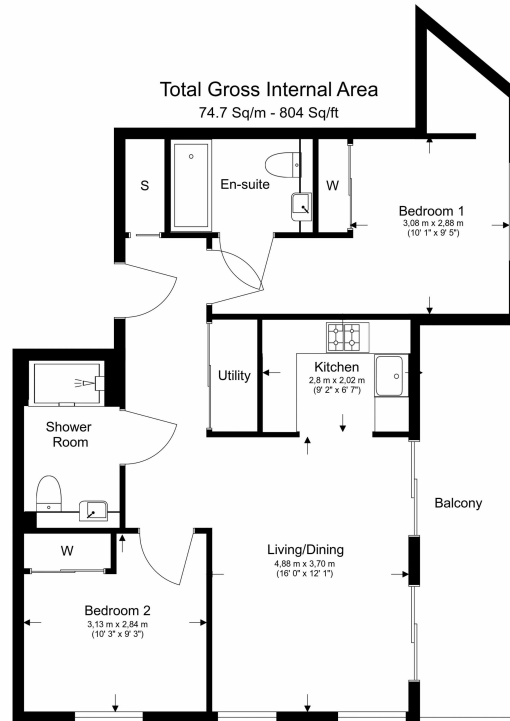
Benham & Reeves



Charles Clowes Walk, Nine Elms, SW11

£750 per week, £3,250 per month + fees

www.benhams.com



Floor Plan measurements are approximate and are for illustrative purposes only. While we do not doubt the floor plans accuracy, we make no guarantee, warranty or representation as to the accuracy and completeness of the floor plan.

Energy Efficiency Rating		
	Current	Potential
<i>Very energy efficient - lower running costs</i>		
(92-100) A		
(81-91) B	86	86
(69-80) C		
(55-68) D		
(39-54) E		
(21-38) F		
(1-20) G		
<i>Not energy efficient - higher running costs</i>		
England & Wales	EU Directive 2002/91/EC	

London branches open six days a week Mon - Sat

Canary Wharf | City | Colindale | Dartmouth Park | Ealing | Fulham
Hammersmith | Hampstead | Highgate | Hyde Park | Kensington | Kew
Knightsbridge | Nine Elms | Shoreditch | Southall | Surrey Quays
Wapping | Wembley | White City | Woolwich

International offices

China | Hong Kong SAR | India | Indonesia | Qatar | Malaysia | Middle East |
Singapore | South Africa | Thailand | Turkey



Benham & Reeves