



Benham&Reeves

Legacy Building, Nine Elms, SW11

£808 per week, £3,500 per month + fees

 1 Bedroom  1 Bathroom  Furnished

A modern 14th floor apartment set in an iconic building situated within a stunning development a five minute walk from Nine Elms Tube Station (Northern Line).

Please [click here](#) for full detail

Property features

Open planned | One double bedroom | Balcony | Air cooling | 14th floor | EPC-B | 24-hour concierge | Swimming Pool | Gym | Nine Elms tube station

For more information about this property,
please call our Nine Elms branch on

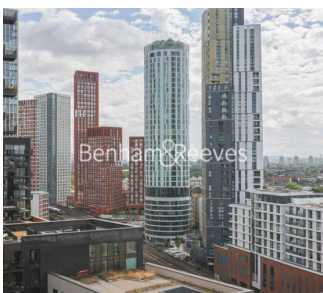
020 3282 3700

Redress & Client Money Protection :

Benham and Reeves are members of The Property Ombudsman redress scheme and have Client Money protection with ARLA Propertymark. You can find more information on our website at <https://www.benhamandreeves.com/membership/>



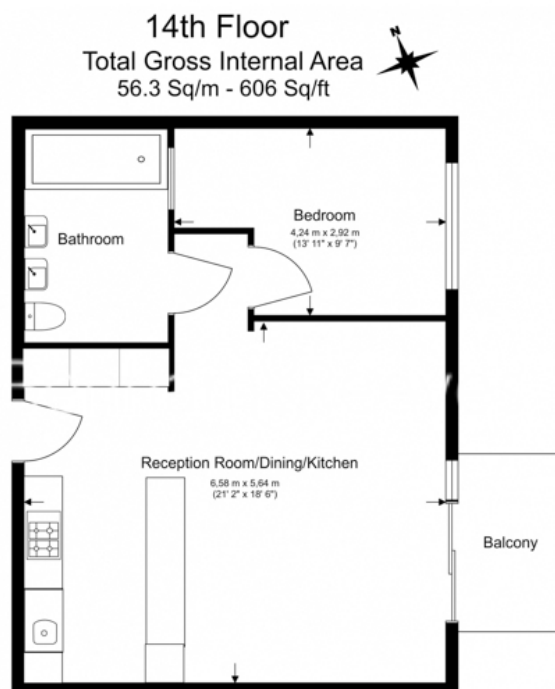
Benham & Reeves



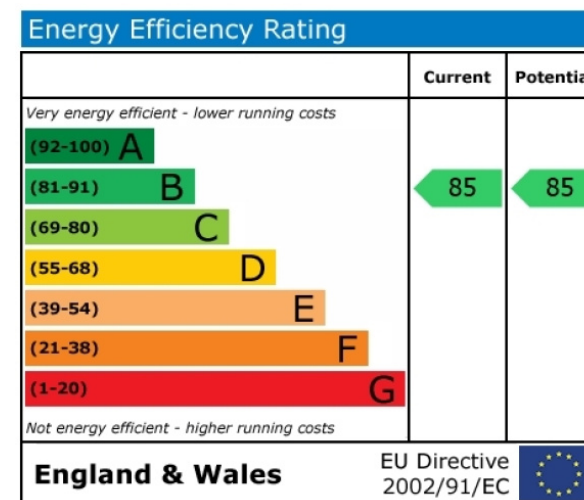
Legacy Building, Nine Elms, SW11

£808 per week, £3,500 per month + fees

www.benhams.com



Floor Plan measurements are approximate and are for illustrative purposes only. While we do not doubt the floor plans accuracy, we make no guarantee, warranty or representation as to the accuracy and completeness of the floor plan.



London branches open six days a week Mon - Sat

Canary Wharf | City | Colindale | Dartmouth Park | Ealing | Fulham
Hammersmith | Hampstead | Highgate | Hyde Park | Kensington | Kew
Knightsbridge | Nine Elms | Shoreditch | Southall | Surrey Quays
Wapping | Wembley | White City | Woolwich

International offices

China | Hong Kong SAR | India | Indonesia | Qatar | Malaysia | Middle East | Pakistan
Singapore | South Africa | Thailand | Turkey



Benham & Reeves