



Benham & Reeves

Circus Road West, Nine Elms, SW11

£1,050 per week, £4,550 per month + fees

🛏️ 2 Bedrooms 🚿 2 Bathrooms 🛋️ Furnished

A bright apartment with winter garden situated in a sought after development with fantastic facilities and views of Battersea Power Station, and a short walk to Battersea Park and The King's Road. .

Please [click here](#) for full detail

Property features

Two Double Bedrooms | Two Bathrooms | Winter Garden | Air cooling | Battersea Power Station views | EPC-C | 24-hour Concierge | Swimming Pool | Gym | Battersea Power Station

For more information about this property,
please call our Nine Elms branch on

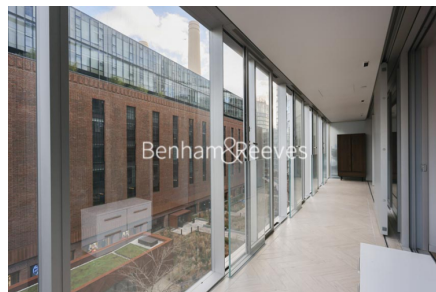
020 3282 3700

Redress & Client Money Protection :

Benham and Reeves are members of The Property Ombudsman redress scheme and have Client Money protection with ARLA Propertymark. You can find more information on our website at <https://www.benham.com/membership/>



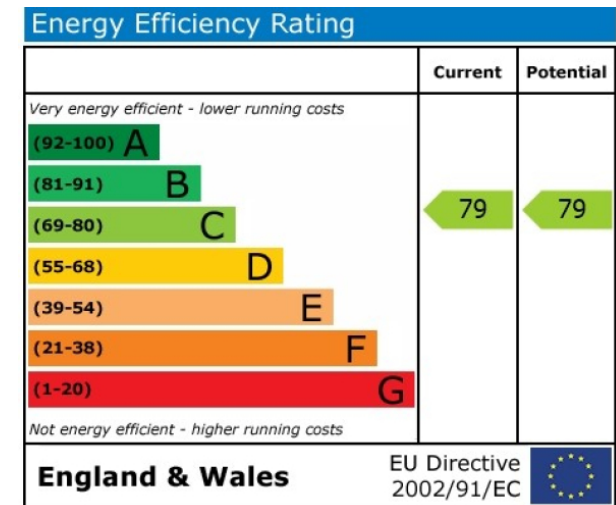
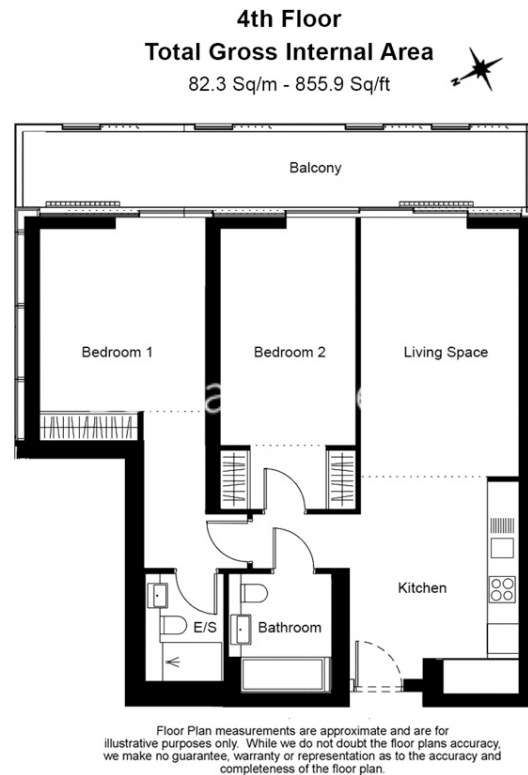
Benham&Reeves



Circus Road West, Nine Elms, SW11

£1,050 per week, £4,550 per month + fees

www.benhams.com



London branches open six days a week Mon - Sat

Canary Wharf | City | Colindale | Dartmouth Park | Ealing | Fulham
Hammersmith | Hampstead | Highgate | Hyde Park | Kensington | Kew
Knightsbridge | Nine Elms | Shoreditch | Southall | Surrey Quays
Wapping | Wembley | White City | Woolwich

International offices

China | Hong Kong SAR | India | Indonesia | Qatar | Malaysia | Middle East | Pakistan
Singapore | South Africa | Thailand | Turkey



Benham & Reeves