



Benham & Reeves

**New Union Square, Nine Elms, SW11**

£1,000 per week, £4,333 per month + fees

 2 Bedrooms    2 Bathrooms    Furnished

A large modern 7th floor apartment situated in a sought-after development close to the River Thames and a short walk from Vauxhall Underground and BR Station.

Please [click here](#) for full detail

## Property features

**Two double bedrooms | Two bathrooms | Furnished | Air cooling | Residence lounge | EPC-B | 24 hour concierge | Swimming pool | Gym | Nearby Vauxhall and Nine Elms Stations**

For more information about this property,  
please call our Nine Elms branch on

**020 3282 3700**

Redress & Client Money Protection :

Benham and Reeves are members of The Property Ombudsman redress scheme and have Client Money protection with ARLA Propertymark. You can find more information on our website at <https://www.benhamandreeves.com/membership/>



Benham & Reeves

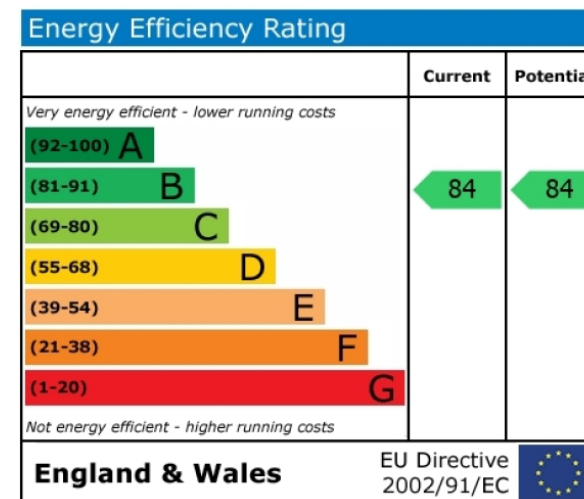
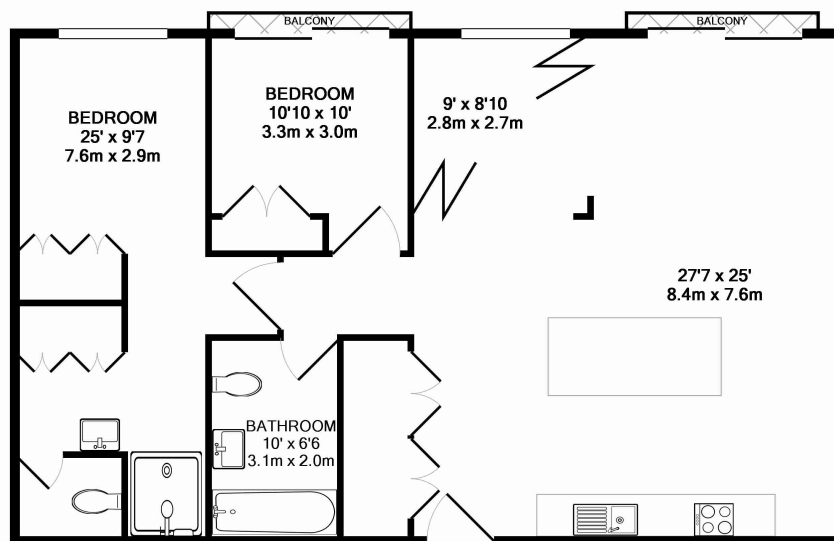




# New Union Square, Nine Elms, SW11

£1,000 per week, £4,333 per month + fees

www.benhams.com



## London branches open six days a week Mon - Sat

Canary Wharf | City | Colindale | Dartmouth Park | Ealing | Fulham  
Hammersmith | Hampstead | Highgate | Hyde Park | Kensington | Kew  
Knightsbridge | Nine Elms | Shoreditch | Southall | Surrey Quays  
Wapping | Wembley | White City | Woolwich

## International offices

China | Hong Kong SAR | India | Indonesia | Qatar | Malaysia | Middle East | Pakistan  
Singapore | South Africa | Thailand | Turkey



Benham & Reeves