



Benham & Reeves

Linear Place, Nine Elms, SW11

£623 per week, £2,700 per month + fees

🛏 Studio 🚿 1 Bathroom 🛋 Unfurnished

A stylish Manhattan studio, with air-cooling, situated in a sought after development located next to Nine Elms Station, close to Vauxhall Station and Battersea Power Station Shopping Centre.

Please [click here](#) for full detail

Property features

Brand new | Unfurnished | Separate sleeping area | Air cooling | Balcony | EPC-B | 24 hour concierge | Balcony | Nine Elms Tube station

For more information about this property, please call our Nine Elms branch on

020 3282 3700

Redress & Client Money Protection :

Benham and Reeves are members of The Property Ombudsman redress scheme and have Client Money protection with ARLA Propertymark. You can find more information on our website at <https://www.benhams.com/membership/>



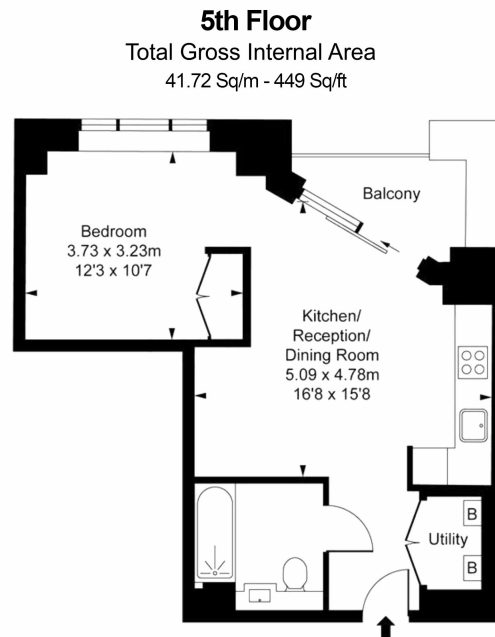
Benham & Reeves



Linear Place, Nine Elms, SW11

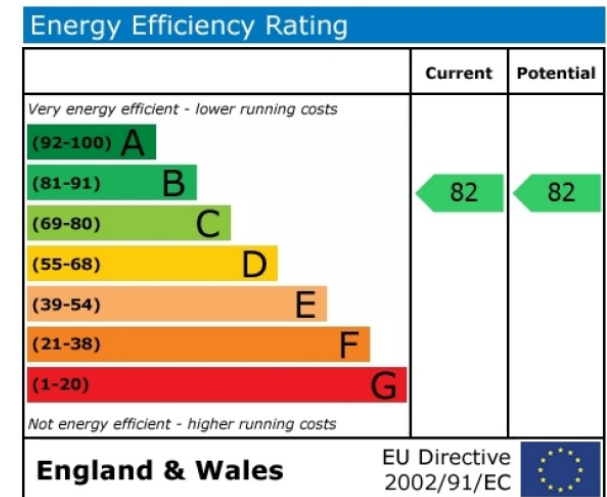
£623 per week, £2,700 per month + fees

www.benhams.com



Benham & Reeves

Floor Plan measurements are approximate and are for illustrative purposes only. While we do not doubt the floor plans accuracy, we make no guarantee, warranty or representation as to the accuracy and completeness of the floor plan.



London branches open six days a week Mon - Sat

Canary Wharf | City | Colindale | Dartmouth Park | Ealing | Fulham
Hammersmith | Hampstead | Highgate | Hyde Park | Kensington | Kew
Knightsbridge | Nine Elms | Shoreditch | Southall | Surrey Quays
Wapping | Wembley | White City | Woolwich

International offices

China | Hong Kong SAR | India | Indonesia | Qatar | Malaysia | Middle East |
Singapore | South Africa | Thailand | Turkey



Benham & Reeves