



Benham & Reeves

**Capital Building, Nine Elms, SW11**

£1,200 per week, £5,200 per month + fees

 2 Bedrooms    2 Bathrooms    Furnished

A spacious fully furnished apartment with direct River views situated in a desirable development with a wide range of facilities, located a 7 minute walk from Vauxhall and Nine Elms stations.

Please [click here](#) for full detail

## Property features

**Two double bedrooms | Two bathrooms | Open planned living | Air cooling | River views | EPC- B | 24 hour concierge | Swimming pool | Gym | Nine Elms and Vauxhall Stations**

For more information about this property, please call our Nine Elms branch on

**020 3282 3700**

Redress & Client Money Protection :

Benham and Reeves are members of The Property Ombudsman redress scheme and have Client Money protection with ARLA Propertymark. You can find more information on our website at <https://www.benhams.com/membership/>



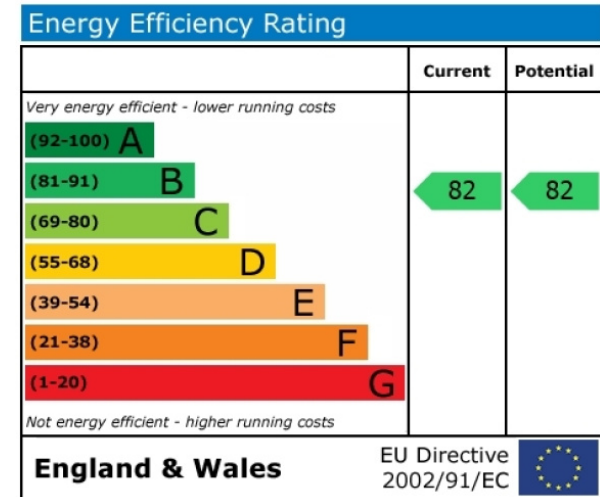
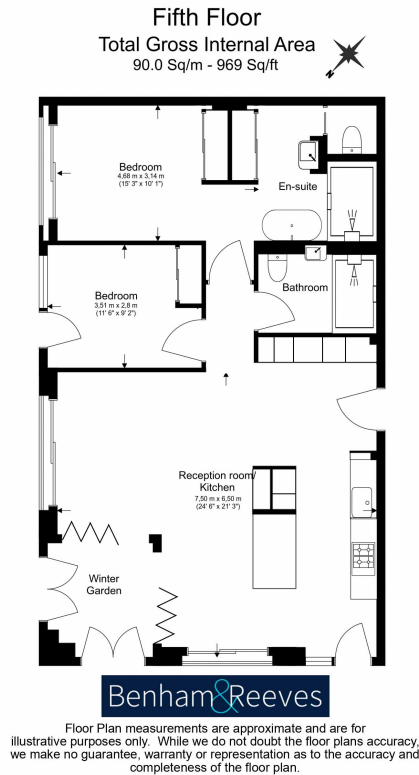
Benham & Reeves



# Capital Building, Nine Elms, SW11

£1,200 per week, £5,200 per month + fees

www.benhams.com



## London branches open six days a week Mon - Sat

Canary Wharf | City | Colindale | Dartmouth Park | Ealing | Fulham  
Hammersmith | Hampstead | Highgate | Hyde Park | Kensington | Kew  
Knightsbridge | Nine Elms | Shoreditch | Southall | Surrey Quays  
Wapping | Wembley | White City | Woolwich

## International offices

China | Hong Kong SAR | India | Indonesia | Qatar | Malaysia | Middle East |  
Singapore | South Africa | Thailand | Turkey

