



Benham&Reeves

New Union Square, Nine Elms, SW11

£660 per week, £2,860 per month + fees

🛏 Studio 🚿 1 Bathroom 🛋 Furnished

Contemporary 8th floor Manhattan studio apartment situated within a desirable development with 5* facilities, a short walk from the River Thames Nine Elms and Vauxhall Underground stations.

Please [click here](#) for full detail

Property features

Manhattan Studio | Furnished | Balcony | Air cooling | Waitrose on site | EPC-C | 24 Hour concierge | Swimming pool | Gym | Nine Elms and Vauxhall Stations

For more information about this property,
please call our Nine Elms branch on

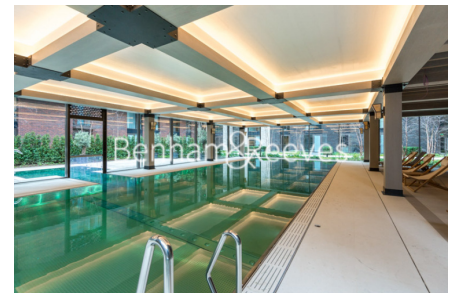
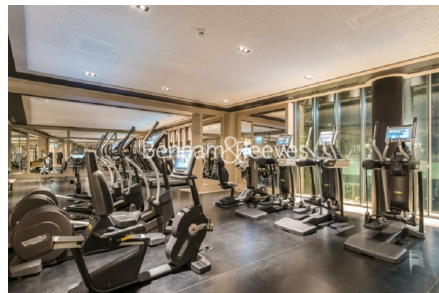
020 3282 3700

Redress & Client Money Protection :

Benham and Reeves are members of The Property Ombudsman redress scheme and have Client Money protection with ARLA Propertymark. You can find more information on our website at <https://www.benhamandreeves.com/membership/>



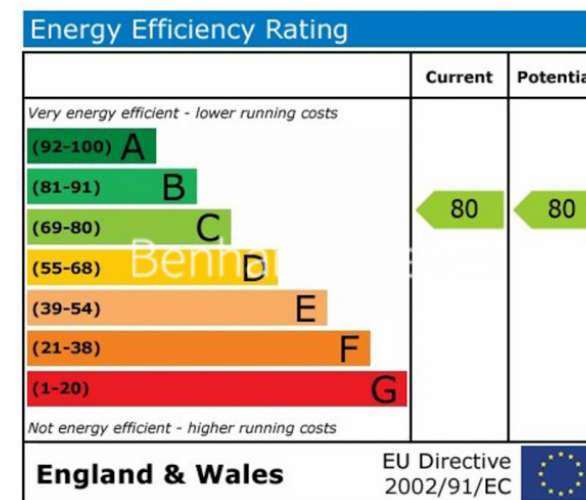
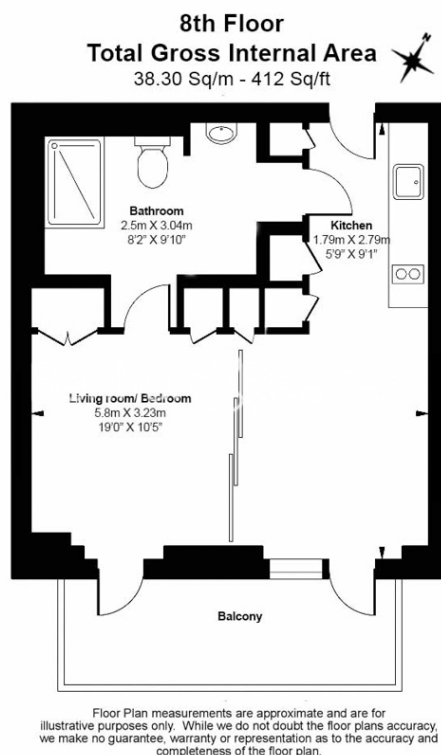
Benham & Reeves



New Union Square, Nine Elms, SW11

£660 per week, £2,860 per month + fees

www.benhams.com



London branches open six days a week Mon - Sat

Canary Wharf | City | Colindale | Dartmouth Park | Ealing | Fulham
Hammersmith | Hampstead | Highgate | Hyde Park | Kensington | Kew
Knightsbridge | Nine Elms | Shoreditch | Southall | Surrey Quays
Wapping | Wembley | White City | Woolwich

International offices

China | Hong Kong SAR | India | Indonesia | Qatar | Malaysia | Middle East |
Singapore | South Africa | Thailand | Turkey



Benham & Reeves