



Benham & Reeves

Millbank, Nine Elms, SW1P

£1,096 per week, £4,749 per month + fees

 1 Bedroom  1 Bathroom  Furnished

A Grade II listed building in a prestigious location off the River Thames and a short walk to Westminster Village. Moments from Westminster, St James, and Victoria Stations.

Please [click here](#) for full detail

Property features

High Spec | Air cooling | Historic development | Open planned living | Fully furnished | EPC-B | 24 hour concierge | Gym | Swimming Pool /Residence Facilities | Westminster Station

For more information about this property,
please call our Nine Elms branch on

020 3282 3700

Redress & Client Money Protection :

Benham and Reeves are members of The Property Ombudsman redress scheme and have Client Money protection with ARLA Propertymark. You can find more information on our website at <https://www.benhamandreeves.com/membership/>



Benham&Reeves

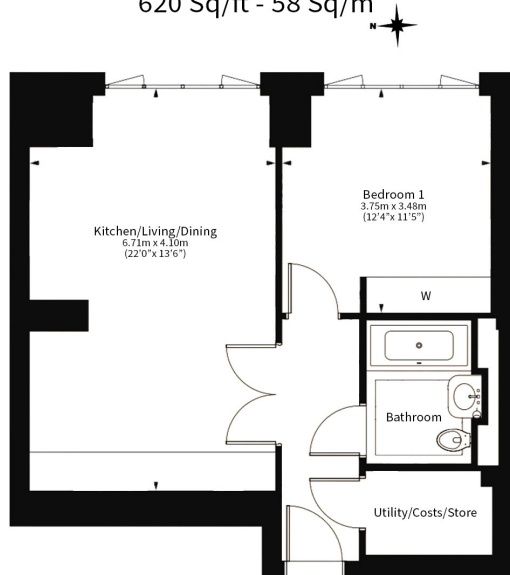


Millbank, Nine Elms, SW1P

£1,096 per week, £4,749 per month + fees

www.benhams.com

Total Gross Internal Area
620 Sq/ft - 58 Sq/m



Floor Plan measurements are approximate and are for illustrative purposes only. While we do not doubt the floor plans accuracy, we make no guarantee, warranty or representation as to the accuracy and completeness of the floor plan.

Energy Efficiency Rating		
	Current	Potential
Very energy efficient - lower running costs		
(92-100) A	82	82
(81-91) B		
(69-80) C		
(55-68) D		
(39-54) E		
(21-38) F		
(1-20) G		
Not energy efficient - higher running costs		
England & Wales		EU Directive 2002/91/EC

London branches open six days a week Mon - Sat

Canary Wharf | City | Colindale | Dartmouth Park | Ealing | Fulham
Hammersmith | Hampstead | Highgate | Hyde Park | Kensington | Kew
Knightsbridge | Nine Elms | Shoreditch | Southall | Surrey Quays
Wapping | Wembley | White City | Woolwich

International offices

China | Hong Kong SAR | India | Indonesia | Qatar | Malaysia | Middle East | Pakistan
Singapore | South Africa | Thailand | Turkey



Benham & Reeves