



Benham & Reeves

## **Millbank Quarter, Nine Elms, SW1P**

£1,000 per week, £4,333 per month + fees

 1 Bedroom    1 Bathroom    Furnished

A Grade II listed building situated in a prestigious location off the River Thames and a short walk to Westminster Village. Moments from Westminster, St James, and Victoria Stations.

Please [click here](#) for full detail

## Property features

**3rd floor | High Spec | Historic development | Open planned living | Furnished | EPC-B | 24 Hour Concierge | Gym | Swimming Pool/Residence Facilities | Westminster Station**

For more information about this property,  
please call our Nine Elms branch on

**020 3282 3700**

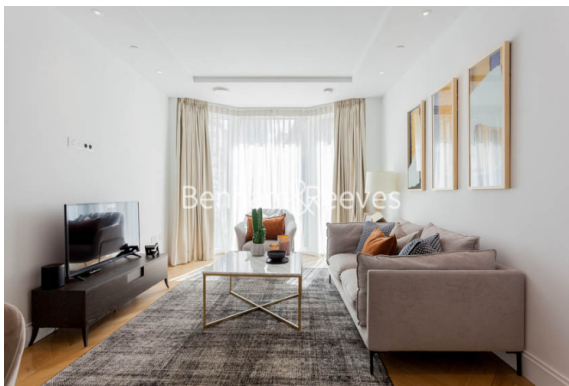
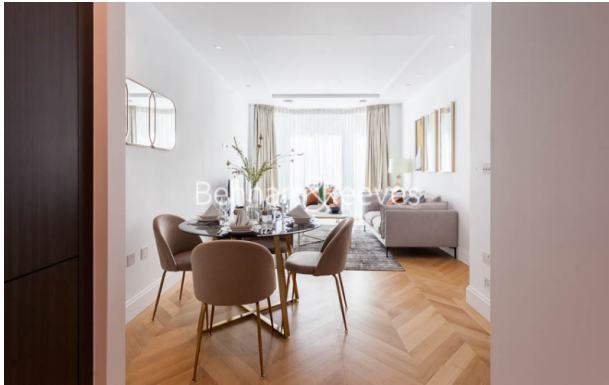
Redress & Client Money Protection :

Benham and Reeves are members of The Property Ombudsman redress scheme and have Client Money protection with ARLA Propertymark. You can find more information on our website at <https://www.benhamandreeves.com/membership/>



Benham & Reeves

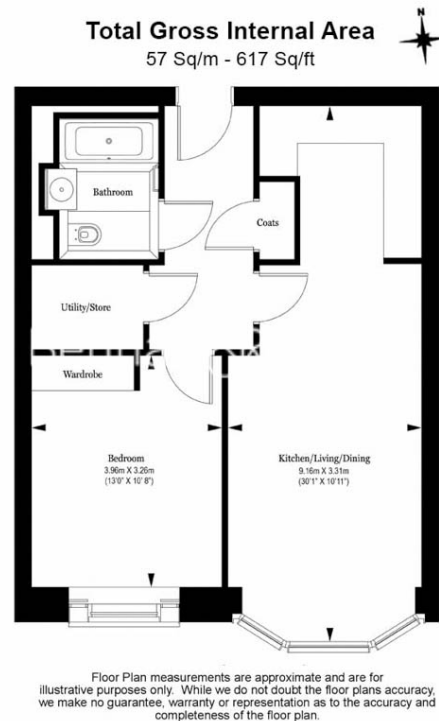




# Millbank Quarter, Nine Elms, SW1P

£1,000 per week, £4,333 per month + fees

www.benhams.com



Energy Efficiency Rating		
	Current	Potential
Very energy efficient - lower running costs		
(92-100) A		
(81-91) B	83	83
(69-80) C		
(55-68) D		
(39-54) E		
(21-38) F		
(1-20) G		
Not energy efficient - higher running costs		
England & Wales		EU Directive 2002/91/EC

## London branches open six days a week Mon - Sat

Canary Wharf | City | Colindale | Dartmouth Park | Ealing | Fulham  
Hammersmith | Hampstead | Highgate | Hyde Park | Kensington | Kew  
Knightsbridge | Nine Elms | Shoreditch | Southall | Surrey Quays  
Wapping | Wembley | White City | Woolwich

## International offices

China | Hong Kong SAR | India | Indonesia | Qatar | Malaysia | Middle East | Pakistan  
Singapore | South Africa | Thailand | Turkey



Benham & Reeves