



Benham&Reeves

Morrish Road, Nine Elms, SW2

£600 per week, £2,600 per month + fees

 1 Bedroom  1 Bathroom  Furnished

A stylish High Spec 1 bedroom apartment situated in a quiet residential street within Brixton Hill

Please [click here](#) for full detail

Property features

Stylish 1-Bedroom Period Conversion | Study/Dressing Room | Large Shower Room + Separate WC | High-Spec Kitchen with Integrated Appliances | Exposed Brickwork & Sash Windows | EPC-C | Quiet Residential Location | Close to local amenities | Close to Brixton Underground and Clapham South

For more information about this property,
please call our Nine Elms branch on

020 3282 3700

Redress & Client Money Protection :

Benham and Reeves are members of The Property Ombudsman redress scheme and have Client Money protection with ARLA Propertymark. You can find more information on our website at <https://www.benhamandreeves.com/membership/>



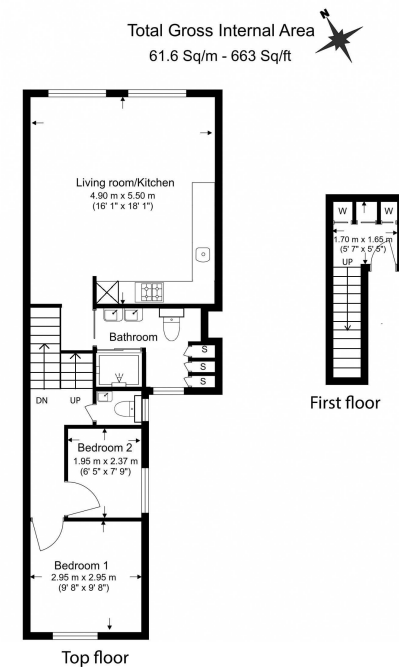
Benham&Reeves



Morrish Road, Nine Elms, SW2

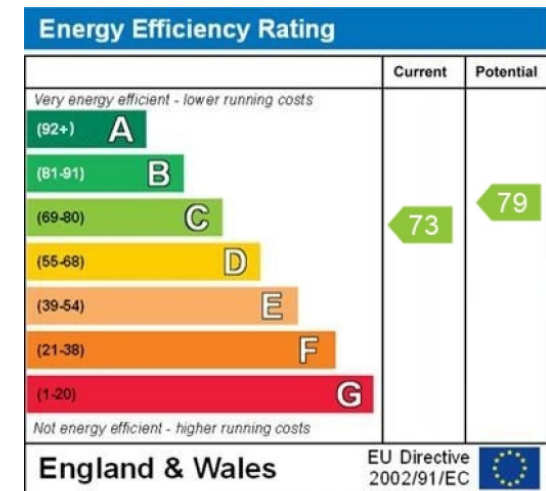
£600 per week, £2,600 per month + fees

www.benhams.com



Benham & Reeves

Floor Plan measurements are approximate and are for illustrative purposes only. While we do not doubt the floor plans accuracy, we make no guarantee, warranty or representation as to the accuracy and completeness of the floor plan.



WWW.EPC4U.COM

London branches open six days a week Mon - Sat

Canary Wharf | City | Colindale | Dartmouth Park | Ealing | Fulham
Hammersmith | Hampstead | Highgate | Hyde Park | Kensington | Kew
Knightsbridge | Nine Elms | Shoreditch | Southall | Surrey Quays
Wapping | Wembley | White City | Woolwich

International offices

China | Hong Kong SAR | India | Indonesia | Qatar | Malaysia | Middle East | Pakistan
Singapore | South Africa | Thailand | Turkey



Benham & Reeves