



Benham & Reeves

Wandsworth Road, Nine Elms, SW8

£800 per week, £3,467 per month + fees

 2 Bedrooms  2 Bathrooms  Furnished

A modern 16th floor apartment, with unspoiled views of South West London and Winter Garden, apartment located on the 16th floor at Sky Gardens with unspoilt views of South West London. Located on Wandsworth Road this property is ideally located for Vauxhall Station with direct trains to Waterloo and the Victoria line with trains to Victoria, Green Park and Oxford Circus.

Please [click here](#) for full detail

Property features

16th Floor | Two double bedrooms | Two bathrooms | Winter garden | Open planned living | EPC-B | Gym | 24 hour concierge | Sky Gardens | Vauxhall and Nine Elms Tube Station

For more information about this property,
please call our Nine Elms branch on

020 3282 3700

Redress & Client Money Protection :

Benham and Reeves are members of The Property Ombudsman redress scheme and have Client Money protection with ARLA Propertymark. You can find more information on our website at <https://www.benhams.com/membership/>



Benham & Reeves



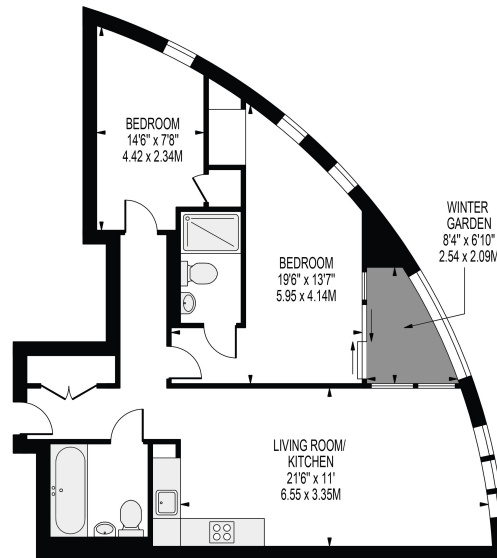
Wandsworth Road, Nine Elms, SW8

£800 per week, £3,467 per month + fees

www.benhams.com

16th Floor

Approx gross internal area: 776 sq/ft - 72 sq/m



Whilst every attempt has been made to ensure the accuracy of the floor plan contained here, measurements of doors, windows, rooms and any other items are approximate and no responsibility is taken for any error, omission, or mis-statement. This plan is for illustrative purposes only and should be used as such by any prospective purchaser. The services, systems and appliances shown have not been tested and no guarantee as to their operability or efficiency can be given.
Made with Metropix ©2016

| Energy Efficiency Rating | | |
|---|-------------------------|-----------|
| | Current | Potential |
| Very energy efficient - lower running costs | | |
| (92-100) A | | |
| (81-91) B | 84 | 84 |
| (69-80) C | | |
| (55-68) D | | |
| (39-54) E | | |
| (21-38) F | | |
| (1-20) G | | |
| Not energy efficient - higher running costs | | |
| England & Wales | EU Directive 2002/91/EC | |

London branches open six days a week Mon - Sat

Canary Wharf | City | Colindale | Dartmouth Park | Ealing | Fulham
Hammersmith | Hampstead | Highgate | Hyde Park | Kensington | Kew
Knightsbridge | Nine Elms | Shoreditch | Southall | Surrey Quays
Wapping | Wembley | White City | Woolwich

International offices

China | Hong Kong SAR | India | Indonesia | Qatar | Malaysia | Middle East | Pakistan
Singapore | South Africa | Thailand | Turkey



Benham & Reeves