



Benham & Reeves

**Bondway, Nine Elms, SW8**

£1,500 per week, £6,500 per month + fees

 2 Bedrooms    2 Bathrooms    Furnished

A brand-new luxury 36th floor apartment with spectacular views of the River Thames and Central London, ideally located a 2-minute walk from Vauxhall Station (Victoria Line).

Please [click here](#) for full detail

## Property features

**Brand new | 36TH FLOOR | Two double bedrooms | Air cooling | Winter Garden | EPC-B | 24 Hour concierge | 5\* Facilities | Swimming Pool | Vauxhall Station**

For more information about this property,  
please call our Nine Elms branch on

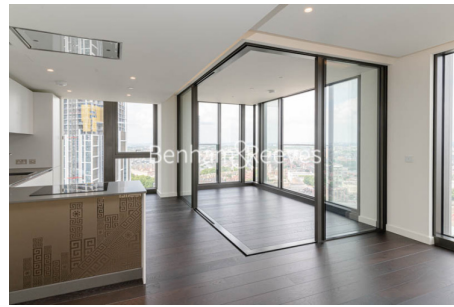
**020 3282 3700**

Redress & Client Money Protection :

Benham and Reeves are members of The Property Ombudsman redress scheme and have Client Money protection with ARLA Propertymark. You can find more information on our website at <https://www.benhams.com/membership/>



Benham & Reeves

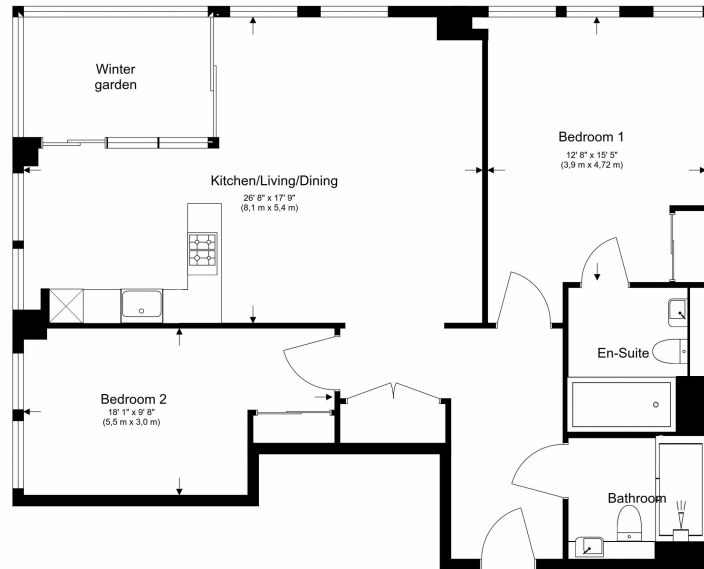


# Bondway, Nine Elms, SW8


£1,500 per week, £6,500 per month + fees

www.benhams.com

Total Gross Internal Area  
93.4 Sq/m - 1006.3 Sq/ft



Floor Plan measurements are approximate and are for illustrative purposes only. While we do not doubt the floor plans accuracy, we make no guarantee, warranty or representation as to the accuracy and completeness of the floor plan.

| Energy Efficiency Rating                           |   |           |
|--|---|-----------|
|  | Current   | Potential |
| <i>Very energy efficient - lower running costs</i> |   |           |
| (92-100) <b>A</b>                                  |   |           |
| (81-91) <b>B</b>                                   | 83  | 83        |
| (69-80) <b>C</b>                                   |   |           |
| (55-68) <b>D</b>                                   |   |           |
| (39-54) <b>E</b>                                   |   |           |
| (21-38) <b>F</b>                                   |   |           |
| (1-20) <b>G</b>                                    |   |           |
| <i>Not energy efficient - higher running costs</i> |   |           |
| <b>England &amp; Wales</b>                         | EU Directive 2002/91/EC  |           |

## London branches open six days a week Mon - Sat

Canary Wharf | City | Colindale | Dartmouth Park | Ealing | Fulham  
Hammersmith | Hampstead | Highgate | Hyde Park | Kensington | Kew  
Knightsbridge | Nine Elms | Shoreditch | Southall | Surrey Quays  
Wapping | Wembley | White City | Woolwich

## International offices

China | Hong Kong SAR | India | Indonesia | Qatar | Malaysia | Middle East |  
Singapore | South Africa | Thailand | Turkey



Benham & Reeves