



Benham & Reeves

Bondway, Nine Elms, SW8

£1,200 per week, £5,200 per month + fees

 2 Bedrooms  2 Bathrooms  Furnished

High spec 26th floor apartment situated in a Versace designed residential development with 5* resident facilities. Located a brief walk from Vauxhall Station Tube (Victoria line).

Please [click here](#) for full detail

Property features

High Spec | 26th Floor | Furnished | Winter garden | Versace designed development | EPC-B | 24 Hour Concierge | 5* facilities | Swimming Pool | Vauxhall Station

For more information about this property,
please call our Nine Elms branch on

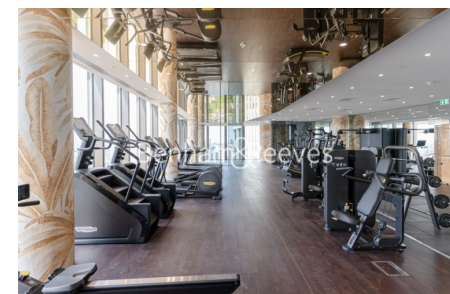
020 3282 3700

Redress & Client Money Protection :

Benham and Reeves are members of The Property Ombudsman redress scheme and have Client Money protection with ARLA Propertymark. You can find more information on our website at <https://www.benhamandreeves.com/membership/>



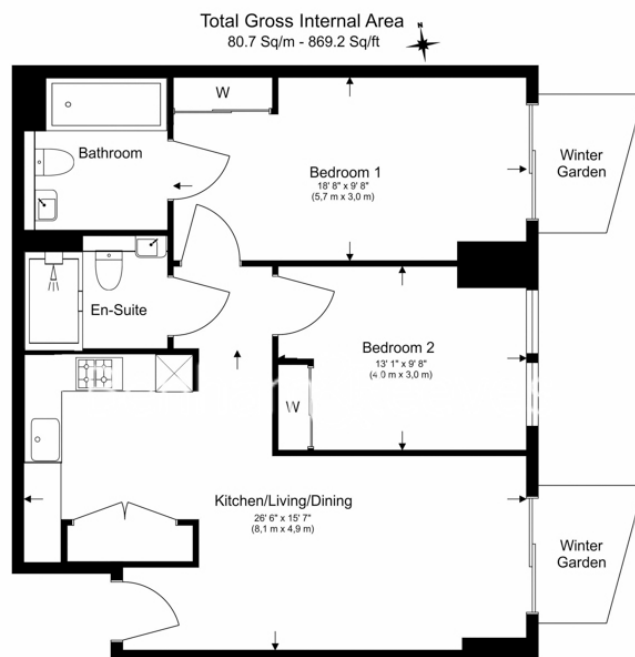
Benham & Reeves



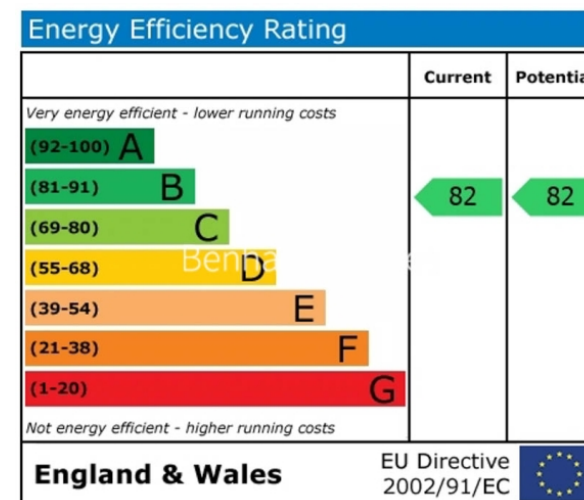
Bondway, Nine Elms, SW8

£1,200 per week, £5,200 per month + fees

www.benhams.com



Floor Plan measurements are approximate and are for illustrative purposes only. While we do not doubt the floor plans accuracy, we make no guarantee, warranty or representation as to the accuracy and completeness of the floor plan.



London branches open six days a week Mon - Sat

Canary Wharf | City | Colindale | Dartmouth Park | Ealing | Fulham
Hammersmith | Hampstead | Highgate | Hyde Park | Kensington | Kew
Knightsbridge | Nine Elms | Shoreditch | Southall | Surrey Quays
Wapping | Wembley | White City | Woolwich

International offices

China | Hong Kong SAR | India | Indonesia | Qatar | Malaysia | Middle East | Pakistan
Singapore | South Africa | Thailand | Turkey



Benham & Reeves