



Benham & Reeves

Carnation Way, Nine Elms, SW8

£1,270 per week, £5,503 per month + fees

 2 Bedrooms  2 Bathrooms  Furnished

A brand new spacious 23rd floor apartment situated within a much anticipated development with Direct River views and a host of facilities finished to a 5* standard. Ideally located a short walk from Vauxhall and Nine Elms tube stations (Victoria and Northern Lines).

Please [click here](#) for full detail

Property features

Brand new | 23rd floor | River views | Air cooling | Open planned living | EPC-B | 24 Hour Concierge | Swimming Pool & Gym | 5* Facilities | Vauxhall Station

For more information about this property,
please call our Nine Elms branch on

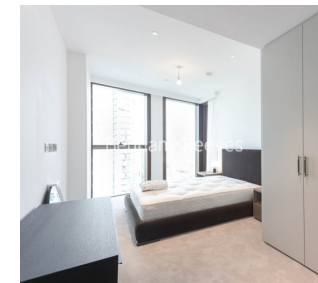
020 3282 3700

Redress & Client Money Protection :

Benham and Reeves are members of The Property Ombudsman redress scheme and have Client Money protection with ARLA Propertymark. You can find more information on our website at <https://www.benham.com/membership/>



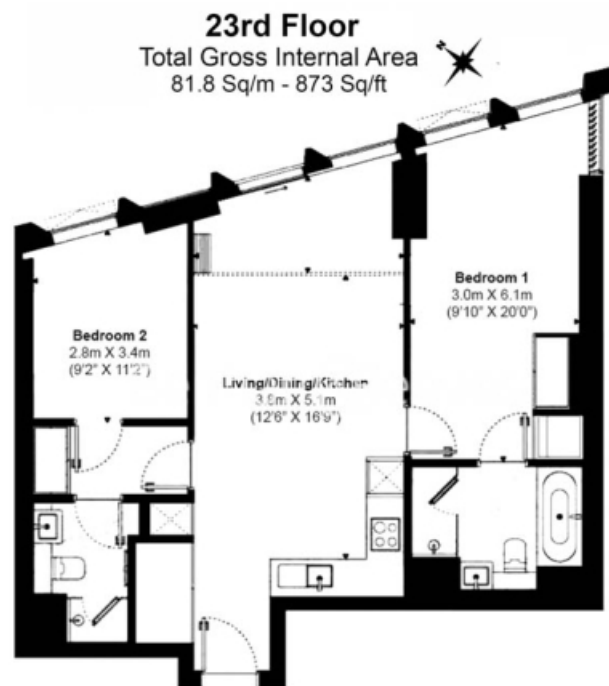
Benham & Reeves



Carnation Way, Nine Elms, SW8

£1,270 per week, £5,503 per month + fees

www.benhams.com



Floor Plan measurements are approximate and are for illustrative purposes only. While we do not doubt the floor plans accuracy, we make no guarantee, warranty or representation as to the accuracy and completeness of the floor plan.

Energy Efficiency Rating		
	Current	Potential
Very energy efficient - lower running costs		
(92-100) A	85	85
(81-91) B		
(69-80) C		
(55-68) D		
(39-54) E		
(21-38) F		
(1-20) G		
Not energy efficient - higher running costs		
England & Wales		EU Directive 2002/91/EC

London branches open six days a week Mon - Sat

Canary Wharf | City | Colindale | Dartmouth Park | Ealing | Fulham
Hammersmith | Hampstead | Highgate | Hyde Park | Kensington | Kew
Knightsbridge | Nine Elms | Shoreditch | Southall | Surrey Quays
Wapping | Wembley | White City | Woolwich

International offices

China | Hong Kong SAR | India | Israel | Malaysia | Middle East | Pakistan
Qatar | Singapore | South Africa | Thailand | Turkey



Benham & Reeves