



Benham & Reeves

Hebden Place, Nine Elms, SW8

£800 per week, £3,467 per month + fees

🛏️ 2 Bedrooms 🚿 2 Bathrooms 🛋️ Furnished

A large 16th floor apartment with scenic views over Central London and the River Thames, situated in a sought-after development next to Nine Elms tube station

Please [click here](#) for full detail

Property features

16th floor | Two bedrooms | Two bathrooms | Large Balcony | Large living room | EPC-B | 24 Hour concierge | Gym | Residence Lounge | Nine Elms Tube Station

For more information about this property,
please call our Nine Elms branch on

020 3282 3700

Redress & Client Money Protection :

Benham and Reeves are members of The Property Ombudsman redress scheme and have Client Money protection with ARLA Propertymark. You can find more information on our website at <https://www.benhamandreeves.com/membership/>



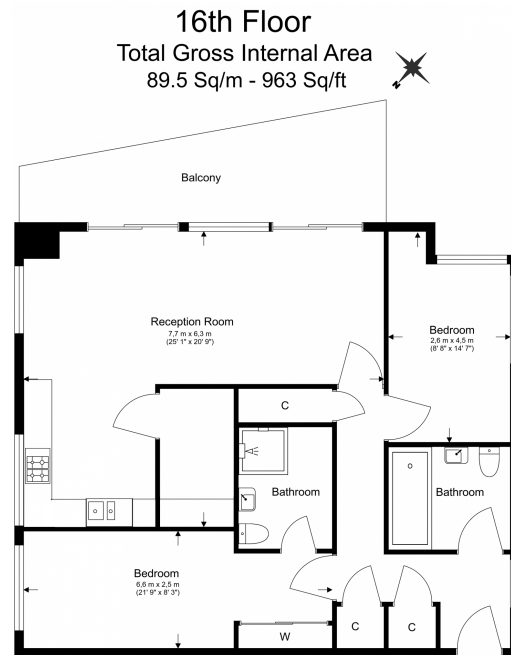
Benham&Reeves



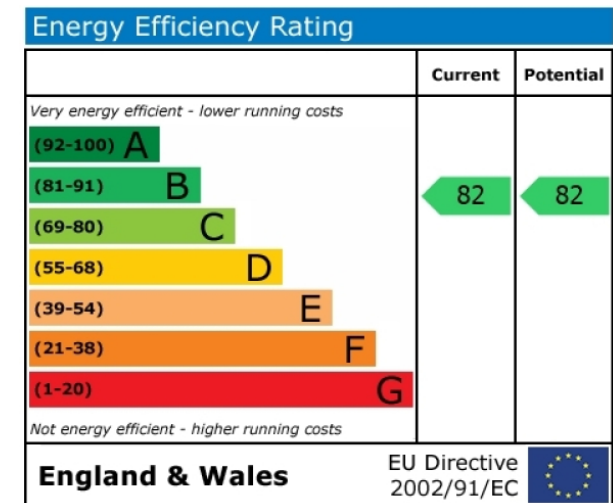
Hebden Place, Nine Elms, SW8

£800 per week, £3,467 per month + fees

www.benhams.com



Floor Plan measurements are approximate and are for illustrative purposes only. While we do not doubt the floor plans accuracy, we make no guarantee, warranty or representation as to the accuracy and completeness of the floor plan.



London branches open six days a week Mon - Sat

Canary Wharf | City | Colindale | Dartmouth Park | Ealing | Fulham
Hammersmith | Hampstead | Highgate | Hyde Park | Kensington | Kew
Knightsbridge | Nine Elms | Shoreditch | Southall | Surrey Quays
Wapping | Wembley | White City | Woolwich

International offices

China | Hong Kong SAR | India | Indonesia | Qatar | Malaysia | Middle East |
Singapore | South Africa | Thailand | Turkey



Benham & Reeves