



Benham & Reeves

Bondway, Nine Elms, SW8

£1,846 per week, £7,999 per month + fees

 3 Bedrooms  3 Bathrooms 
Furnished/UnFurnished

A brand-new large 17th floor apartment with stunning views of South West London, situated in a sought-after development in Nine Elms. Perfectly located a two-minute walk from Vauxhall Station.

Please [click here](#) for full detail

Property features

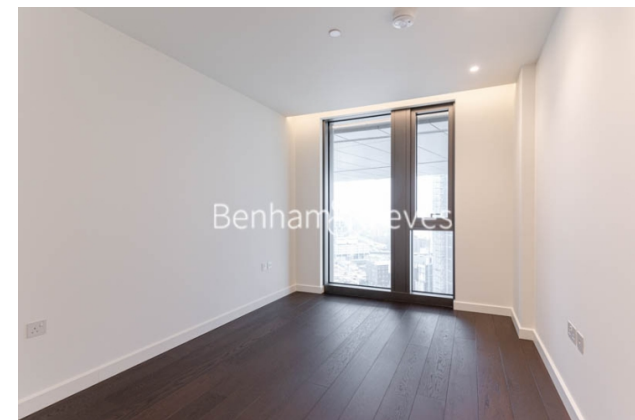
Brand new | 17th FLOOR | Three double bedrooms | Air cooling | Winter Garden | EPC-TBC | 24 Hour concierge | 5* Facilities | Swimming Pool | Vauxhall Station

For more information about this property,
please call our Nine Elms branch on

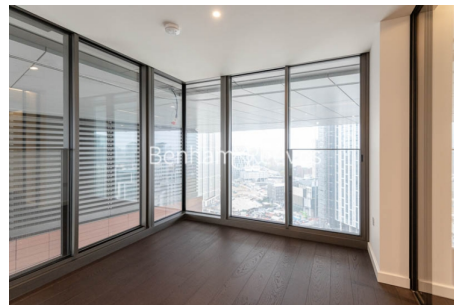
020 3282 3700

Redress & Client Money Protection :

Benham and Reeves are members of The Property Ombudsman redress scheme and have Client Money protection with ARLA Propertymark. You can find more information on our website at <https://www.benhamandreeves.com/membership/>



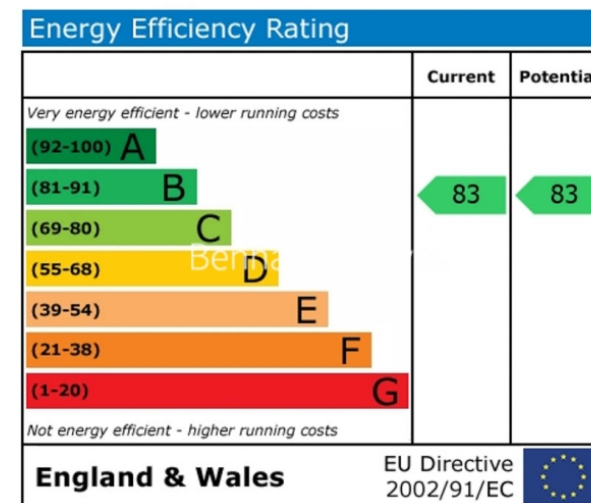
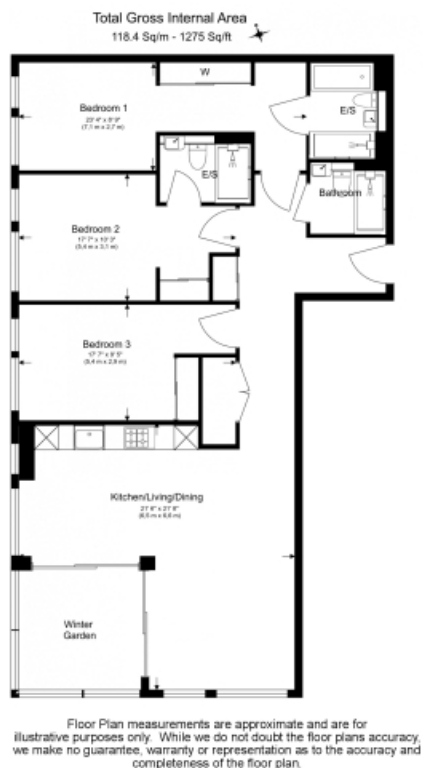
Benham & Reeves



Bondway, Nine Elms, SW8

£1,846 per week, £7,999 per month + fees

www.benhams.com



London branches open six days a week Mon - Sat

Canary Wharf | City | Colindale | Dartmouth Park | Ealing | Fulham
Hammersmith | Hampstead | Highgate | Hyde Park | Kensington | Kew
Knightsbridge | Nine Elms | Shoreditch | Southall | Surrey Quays
Wapping | Wembley | White City | Woolwich

International offices

China | Hong Kong SAR | India | Indonesia | Qatar | Malaysia | Middle East | Pakistan
Singapore | South Africa | Thailand | Turkey



Benham & Reeves