



Benham & Reeves

Gladwin Tower, Nine Elms, SW8

£808 per week, £3,500 per month + fees

 2 Bedrooms  2 Bathrooms  Furnished

A modern, spacious 13th floor apartment, with a host of onsite amenities, located next to the new Nine Elms Tube Station and a short walk from Vauxhall Station.

Please [click here](#) for full detail

Property features

Two Double bedrooms | Two bathrooms | Air cooling | Balcony | Communal gardens | EPC-B | 24 Hour concierge | Residence Gym | Sainsburys and Chinese supermarket onsite | Nine Elms Tube Station

For more information about this property,
please call our Nine Elms branch on

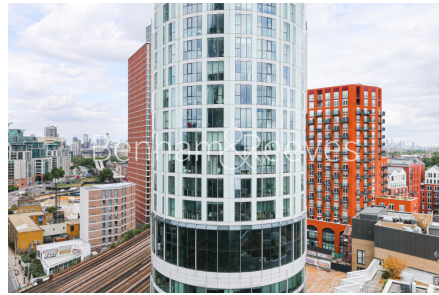
020 3282 3700

Redress & Client Money Protection :

Benham and Reeves are members of The Property Ombudsman redress scheme and have Client Money protection with ARLA Propertymark. You can find more information on our website at <https://www.benhams.com/membership/>



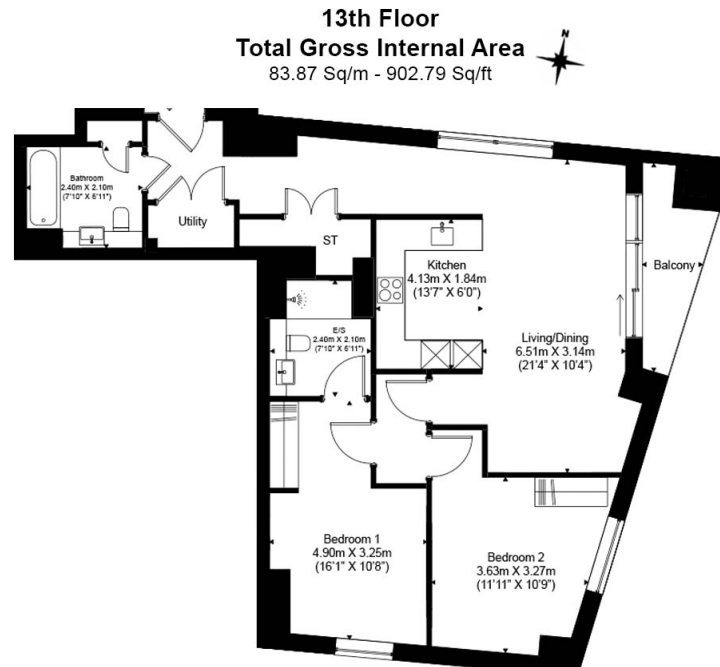
Benham & Reeves



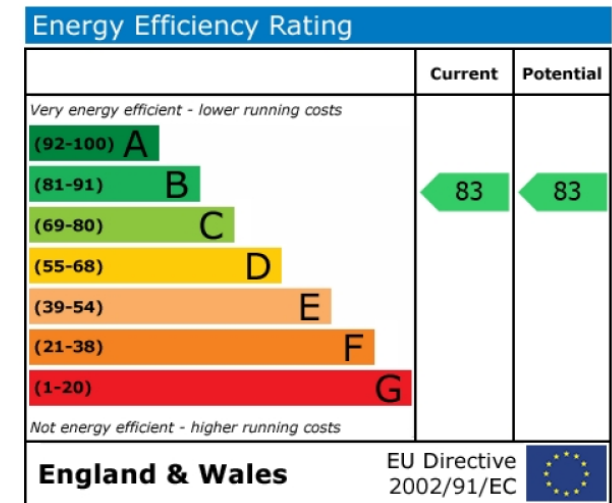
Gladwin Tower, Nine Elms, SW8

£808 per week, £3,500 per month + fees

www.benhams.com



Floor Plan measurements are approximate and are for illustrative purposes only. While we do not doubt the floor plans accuracy, we make no guarantee, warranty or representation as to the accuracy and completeness of the floor plan.



London branches open six days a week Mon - Sat

Canary Wharf | City | Colindale | Dartmouth Park | Ealing | Fulham
Hammersmith | Hampstead | Highgate | Hyde Park | Kensington | Kew
Knightsbridge | Nine Elms | Shoreditch | Southall | Surrey Quays
Wapping | Wembley | White City | Woolwich

International offices

China | Hong Kong SAR | India | Indonesia | Qatar | Malaysia | Middle East |
Singapore | South Africa | Thailand | Turkey



Benham & Reeves