



Benham & Reeves

**Cornell Square, Nine Elms, SW8**

£475 per week, £2,058 per month + fees

🛏 1 Bedroom    🚿 1 Bathroom    🛋 Furnished

Contemporary 6th floor apartment, with lift access and video entry, situated within a popular development within walking distance from Nine Elms, Stockwell and Vauxhall Tube station

Please [click here](#) for full detail

## Property features

**One double bedroom | Open planned living room | Balcony | Dishwasher | Washer/dryer | EPC-C | Concierge | Tesco Express located on site | Pure Gym located on site (additional costs apply) | Nearby Nine Elms Tube Station**

For more information about this property,  
please call our Nine Elms branch on

**020 3282 3700**

Redress & Client Money Protection :

Benham and Reeves are members of The Property Ombudsman redress scheme and have Client Money protection with ARLA Propertymark. You can find more information on our website at <https://www.benhams.com/membership/>



**Benham & Reeves**



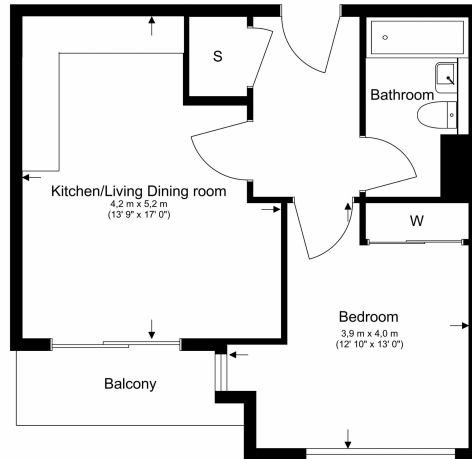


# Cornell Square, Nine Elms, SW8

£475 per week, £2,058 per month + fees

www.benhams.com

Total Gross Internal Area  
39 Sq/m - 419.7 Sq/ft



Benham & Reeves

Floor Plan measurements are approximate and are for illustrative purposes only. While we do not doubt the floor plans accuracy, we make no guarantee, warranty or representation as to the accuracy and completeness of the floor plan.

Score	Energy rating	Current	Potential
92+	A		
81-91	B		84 B
69-80	C	80 C	
55-68	D		
39-54	E		
21-38	F		
1-20	G		

## London branches open six days a week Mon - Sat

Canary Wharf | City | Colindale | Dartmouth Park | Ealing | Fulham  
Hammersmith | Hampstead | Highgate | Hyde Park | Kensington | Kew  
Knightsbridge | Nine Elms | Shoreditch | Southall | Surrey Quays  
Wapping | Wembley | White City | Woolwich

## International offices

China | Hong Kong SAR | India | Indonesia | Qatar | Malaysia | Middle East |  
Singapore | South Africa | Thailand | Turkey



Benham & Reeves