



Benham & Reeves

Sky Gardens, Nine Elms, SW8

£808 per week, £3,500 per month + fees

 2 Bedrooms  2 Bathrooms  Furnished

A 14th floor two-bedroom apartment located in the sought after Sky Gardens development in Nine Elms.

Please [click here](#) for full detail

Property features

14th floor | Two double bedrooms | Two bathrooms | Winter Garden | Dishwasher | EPC-B | 24 hour concierge | Gym | Sky Gardens | Nine Elms and Vauxhall Stations

For more information about this property, please call our Nine Elms branch on

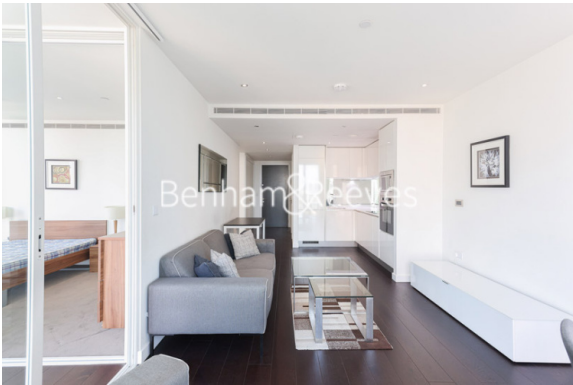
020 3282 3700



Redress & Client Money Protection :

Benham and Reeves are members of The Property Ombudsman redress scheme and have Client Money protection with ARLA Propertymark. You can find more information on our website at <https://www.benham.com/membership/>

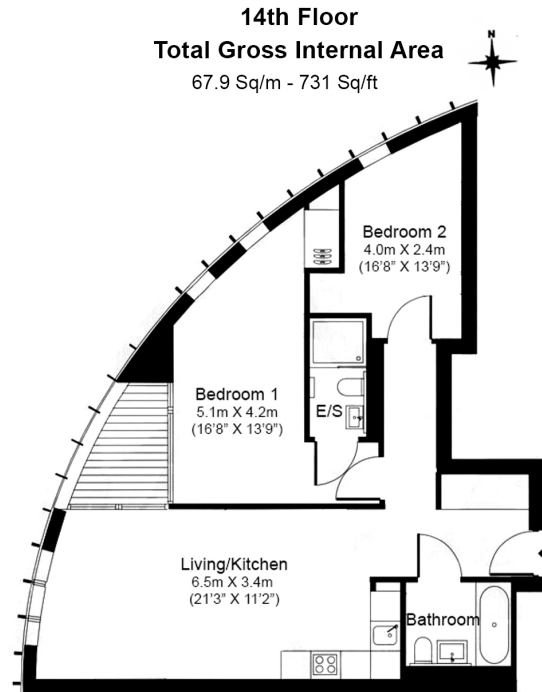
Benham & Reeves



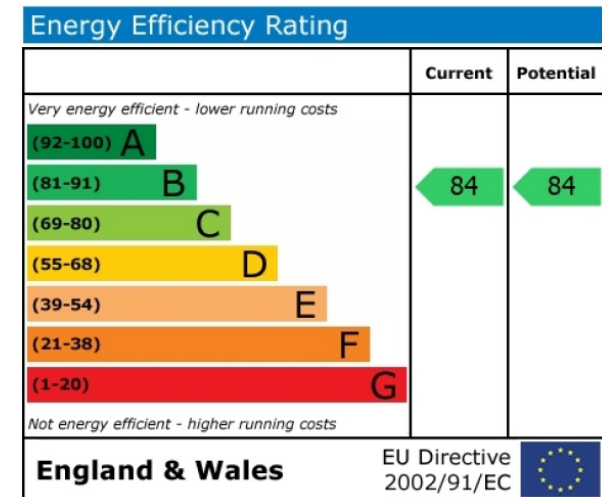
Sky Gardens, Nine Elms, SW8

£808 per week, £3,500 per month + fees

www.benhams.com



Floor Plan measurements are approximate and are for illustrative purposes only. While we do not doubt the floor plans accuracy, we make no guarantee, warranty or representation as to the accuracy and completeness of the floor plan.



London branches open six days a week Mon - Sat

Canary Wharf | City | Colindale | Dartmouth Park | Ealing | Fulham
 Hammersmith | Hampstead | Highgate | Hyde Park | Kensington | Kew
 Knightsbridge | Nine Elms | Shoreditch | Southall | Surrey Quays
 Wapping | Wembley | White City | Woolwich

International offices

China | Hong Kong SAR | India | Indonesia | Qatar | Malaysia | Middle East |
 Singapore | South Africa | Thailand | Turkey

