



Benham & Reeves

Gladwin Tower, Nine Elms, SW8

£623 per week, £2,700 per month + fees

🛏 1 Bedroom 🚿 1 Bathroom 🛋 Furnished

A spacious modern apartment set within a sought-after Tower development with in-house amenities located next to Nine Elms tube station.

Please [click here](#) for full detail

Property features

Large one double bedroom | Open planned living | Dishwasher | Air cooling | Balcony | EPC-B | 24 Hour Concierge | Gym | Large supermarket on site | Nine Elms tube station

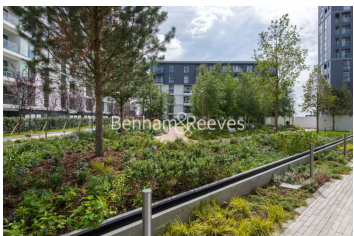
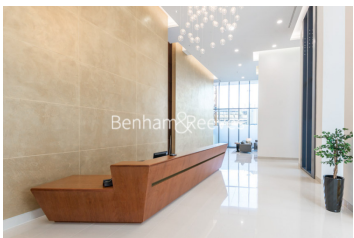
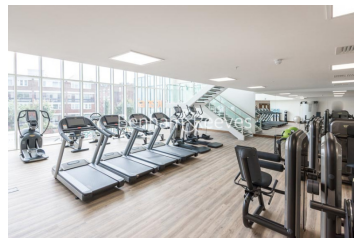
For more information about this property,
please call our Nine Elms branch on

020 3282 3700



Redress & Client Money Protection :
Benham and Reeves are members of The Property Ombudsman redress scheme and have Client Money protection with ARLA Propertymark.
You can find more information on our website at <https://www.benhamandreeves.com/membership/>

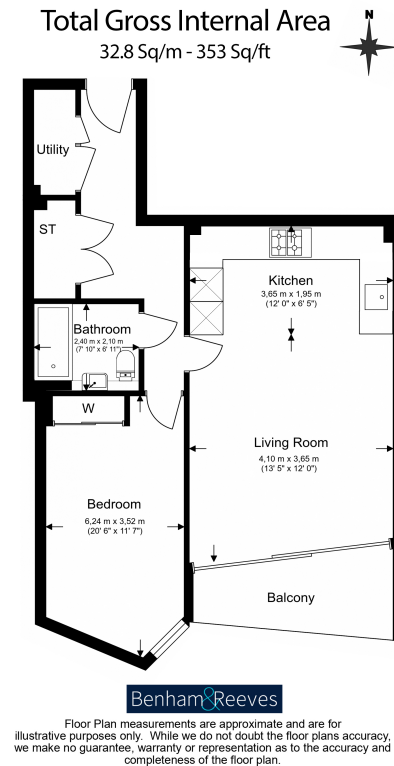
Benham & Reeves



Gladwin Tower, Nine Elms, SW8

£623 per week, £2,700 per month + fees

www.benhams.com



Energy Efficiency Rating		
	Current	Potential
Very energy efficient - lower running costs		
(92-100) A		
(81-91) B	83	83
(69-80) C		
(55-68) D		
(39-54) E		
(21-38) F		
(1-20) G		
Not energy efficient - higher running costs		
England & Wales	EU Directive 2002/91/EC	

London branches open six days a week Mon - Sat

Canary Wharf | City | Colindale | Dartmouth Park | Ealing | Fulham
Hammersmith | Hampstead | Highgate | Hyde Park | Kensington | Kew
Knightsbridge | Nine Elms | Shoreditch | Southall | Surrey Quays
Wapping | Wembley | White City | Woolwich

International offices

China | Hong Kong SAR | India | Indonesia | Qatar | Malaysia | Middle East |
Singapore | South Africa | Thailand | Turkey



BenhamReeves