



Benham & Reeves

**Brent House, Nine Elms, SW8**

£675 per week, £2,925 per month + fees

 1 Bedroom    1 Bathroom    Furnished

A bright apartment situated in a popular development next to Nine Elms Tube Station which offers direct trains to Waterloo and Central London

Please [click here](#) for full detail

## Property features

**One bedroom | Open planned living | Balcony | Dishwasher | Furnished | EPC-B | 24 hour concierge | Residence Gym | Residence lounge | Nine Elms tube station**

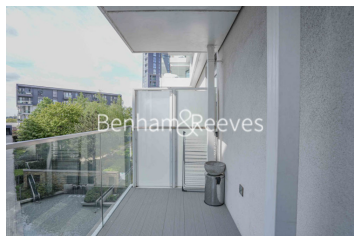
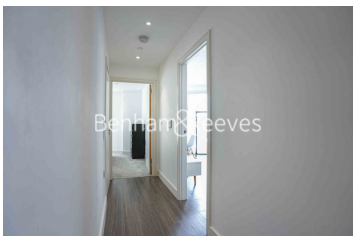
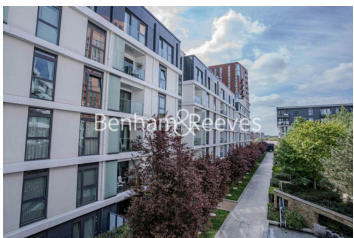
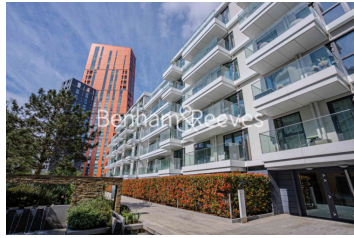
For more information about this property,  
please call our Nine Elms branch on

**020 3282 3700**



Redress & Client Money Protection :  
Benham and Reeves are members of The Property Ombudsman redress scheme and have Client Money protection with ARLA Propertymark.  
You can find more information on our website at <https://www.benhamandreeves.com/membership/>

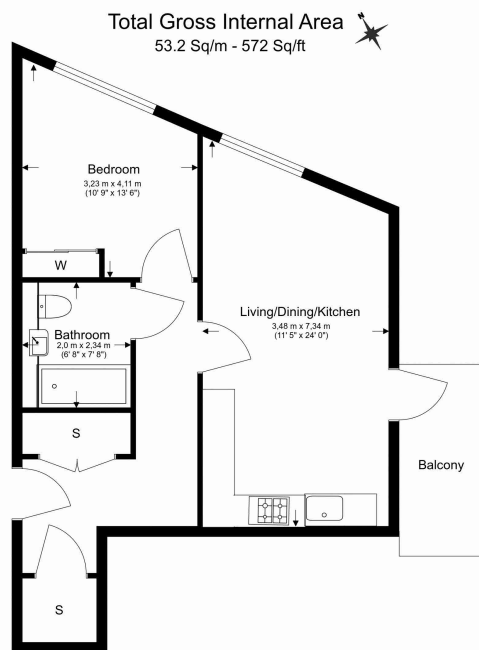
**Benham&Reeves**



# Brent House, Nine Elms, SW8

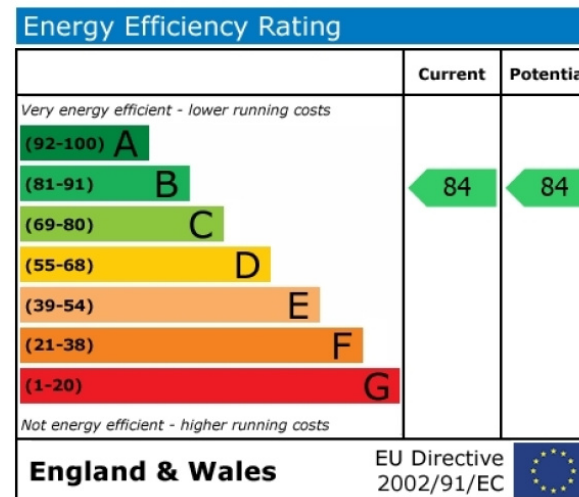
£675 per week, £2,925 per month + fees

www.benhams.com



Benham & Reeves

Floor Plan measurements are approximate and are for illustrative purposes only. While we do not doubt the floor plans accuracy, we make no guarantee, warranty or representation as to the accuracy and completeness of the floor plan.



## London branches open six days a week Mon - Sat

Canary Wharf | City | Colindale | Dartmouth Park | Ealing | Fulham  
Hammersmith | Hampstead | Highgate | Hyde Park | Kensington | Kew  
Knightsbridge | Nine Elms | Shoreditch | Southall | Surrey Quays  
Wapping | Wembley | White City | Woolwich

## International offices

China | Hong Kong SAR | India | Indonesia | Qatar | Malaysia | Middle East | Pakistan  
Singapore | South Africa | Thailand | Turkey



Benham & Reeves