



Benham & Reeves

**Low House, Nine Elms, SW8 2FT**

£623 per week, £2,700 per month + fees

 1 Bedroom    1 Bathroom    Furnished

A recently refurbished apartment, with views over the communal gardens, situated in a sought after development next to the Nine Elms Tube Station with direct trains to Central London (Northern Line).

Please [click here](#) for full detail

## Property features

Recently refurbished | One double bedroom | Furnished | Dishwasher | Balcony | EPC-B | 24 Hour concierge | Gym | Residence Lounge | Nine Elms tube station

For more information about this property, please call our Nine Elms branch on

**020 3282 3700**

Redress & Client Money Protection :

Benham and Reeves are members of The Property Ombudsman redress scheme and have Client Money protection with ARLA Propertymark. You can find more information on our website at <https://www.benhams.com/membership/>



Benham & Reeves

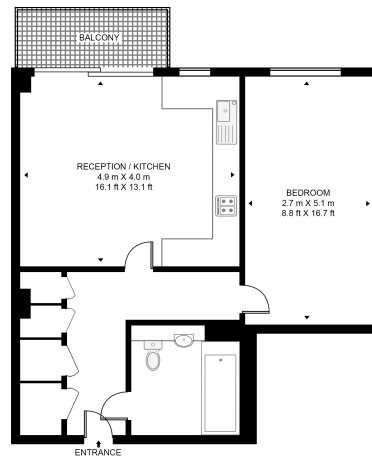


# Lowe House, Nine Elms, SW8 2FT

£623 per week, £2,700 per month + fees

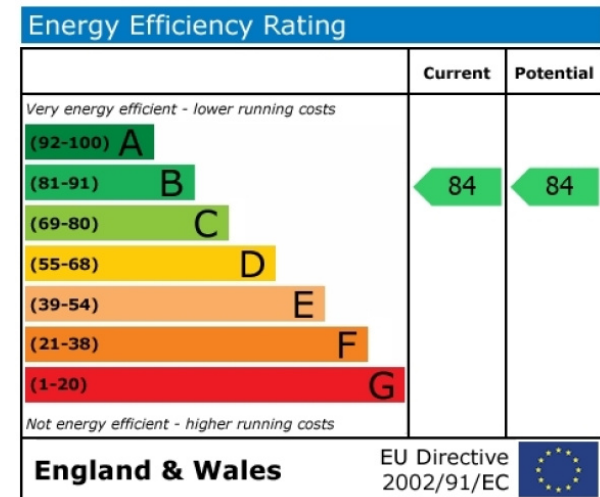
www.benhams.com

LOWE HOUSE, NINE ELMS POINT  
APPROXIMATE GROSS INTERNAL FLOOR AREA 556 SQ.FT (51.7 SQ.M)



FIFTH FLOOR

This floor plan has been defined by the RICS Code of Measurement. This floor plan and all others are for approximate representative purposes only and upon usage is agreed to as such by the client.  
WWW: hcrvirtual.com | TEL: 0203 974 1567 | EMAIL: info@hcrvirtual.com



## London branches open six days a week Mon - Sat

Canary Wharf | City | Colindale | Dartmouth Park | Ealing | Fulham  
Hammersmith | Hampstead | Highgate | Hyde Park | Kensington | Kew  
Knightsbridge | Nine Elms | Shoreditch | Southall | Surrey Quays  
Wapping | Wembley | White City | Woolwich

## International offices

China | Hong Kong SAR | India | Indonesia | Qatar | Malaysia | Middle East |  
Singapore | South Africa | Thailand | Turkey



Benham & Reeves