



Benham & Reeves

## **Bach House, Nine Elms, SW8**

£623 per week, £2,700 per month + fees

 Studio    1 Bathroom    Furnished

A modern Manhattan Studio apartment with large private terrace situated in popular development with security and residents' gym. Located next to Nine Elms Tube Station (Northern Line).

Please [click here](#) for full detail

## Property features

**Large private Terrace | Semi open planned living room | Furnished | Dishwasher | Residence lounge | EPC- B | 24 Hour concierge | Gym | Nine Elms Tube station**

For more information about this property,  
please call our Nine Elms branch on

**020 3282 3700**

Redress & Client Money Protection :

Benham and Reeves are members of The Property Ombudsman redress scheme and have Client Money protection with ARLA Propertymark. You can find more information on our website at <https://www.benhamandreeves.com/membership/>



**Benham & Reeves**

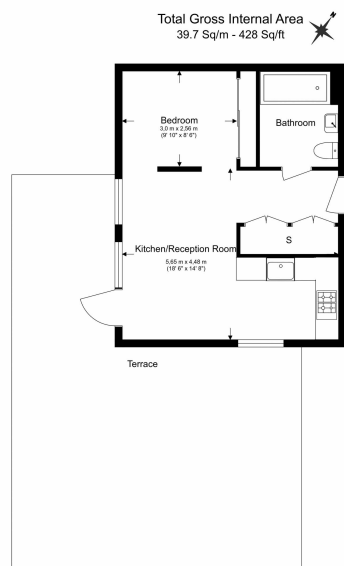




# Bach House, Nine Elms, SW8

£623 per week, £2,700 per month + fees

[www.benhams.com](http://www.benhams.com)



Benham & Reeves

Floor Plan measurements are approximate and are for illustrative purposes only. While we do not doubt the floor plans accuracy, we make no guarantee, warranty or representation as to the accuracy and completeness of the floor plan.

Score	Energy rating	Current	Potential
92+	A		
81-91	B	81 B	81 B
69-80	C		
55-68	D		
39-54	E		
21-38	F		
1-20	G		

## London branches open six days a week Mon - Sat

Canary Wharf | City | Colindale | Dartmouth Park | Ealing | Fulham  
Hammersmith | Hampstead | Highgate | Hyde Park | Kensington | Kew  
Knightsbridge | Nine Elms | Shoreditch | Southall | Surrey Quays  
Wapping | Wembley | White City | Woolwich

## International offices

China | Hong Kong SAR | India | Indonesia | Qatar | Malaysia | Middle East | Pakistan  
Singapore | South Africa | Thailand | Turkey



Benham & Reeves