



Benham & Reeves

Cornell Square, Nine Elms, SW8

£531 per week, £2,300 per month + fees

 1 Bedroom  1 Bathroom  Furnished

A well presented 5th Floor, One-Bedroom apartment within the popular development Cornell Square. Measuring an impressive 500 sq ft, this property benefits from a 24-Hr Concierge, lift access and floor to ceiling windows. Further benefits include a video-entry system and under-floor heating.

Please [click here](#) for full detail

Property features

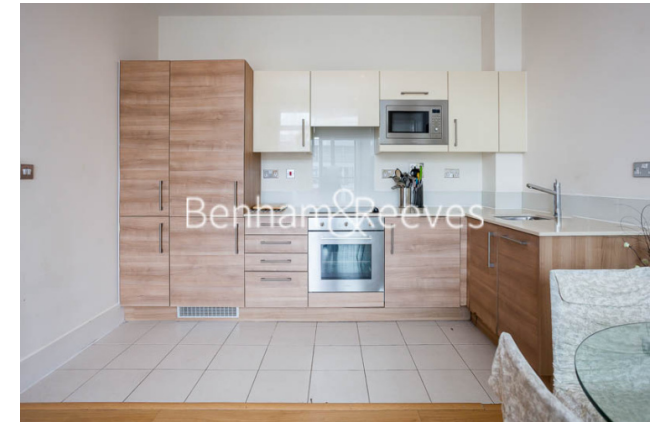
One double bedroom | Balcony | Dishwasher | Open planned living room | Furnished | EPC-C | Concierge service | Supermarket on site | Nine Elms tube station

For more information about this property,
please call our Nine Elms branch on

020 3282 3700

Redress & Client Money Protection :

Benham and Reeves are members of The Property Ombudsman redress scheme and have Client Money protection with ARLA Propertymark. You can find more information on our website at <https://www.benham.com/membership/>



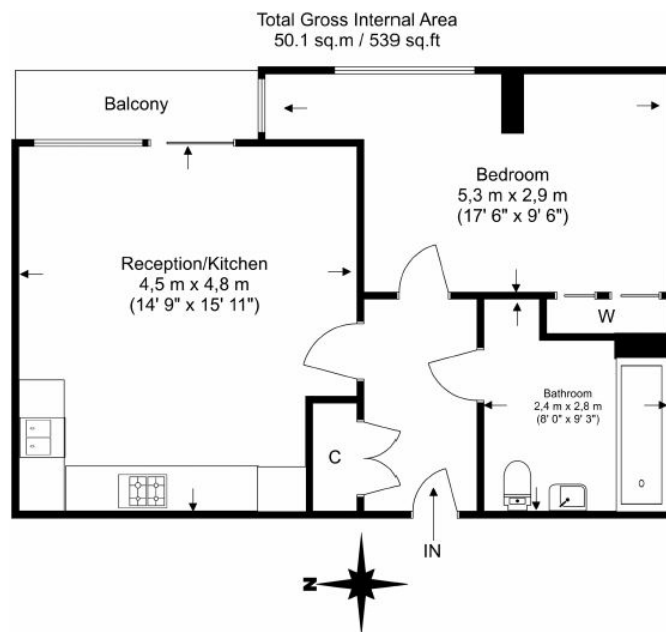
Benham & Reeves



Cornell Square, Nine Elms, SW8

£531 per week, £2,300 per month + fees

www.benhams.com



Floor Plan measurements are approximate and are for illustrative purposes only. While we do not doubt the floor plans accuracy, we make no guarantee, warranty or representation as to the accuracy and completeness of the floor plan.

Score	Energy rating	Current	Potential
92+	A		
81-91	B		83 B
69-80	C	76 C	
55-68	D		
39-54	E		
21-38	F		
1-20	G		

London branches open six days a week Mon - Sat

Canary Wharf | City | Colindale | Dartmouth Park | Ealing | Fulham
Hammersmith | Hampstead | Highgate | Hyde Park | Kensington | Kew
Knightsbridge | Nine Elms | Shoreditch | Southall | Surrey Quays
Wapping | Wembley | White City | Woolwich

International offices

China | Hong Kong SAR | India | Indonesia | Qatar | Malaysia | Middle East | Pakistan
Singapore | South Africa | Thailand | Turkey



Benham & Reeves