



Benham & Reeves

Pinto Tower, Nine Elms, SW8

£842 per week, £3,650 per month + fees

 2 Bedrooms  2 Bathrooms  Furnished

A spacious two-bedroom apartment situated on the 13th floor at Nine Elms Point. The property benefits from sweeping over London, while residents enjoy access to 24-hour concierge, gym, lounge and roof terrace.

Please [click here](#) for full detail

Property features

13TH Floor | Two double bedrooms | Two bathrooms | Dishwasher | Balcony | EPC-C | 24 hour concierge | Gym | Residence lounge | Nine Elms Tube station

For more information about this property, please call our Nine Elms branch on

020 3282 3700

Redress & Client Money Protection :

Benham and Reeves are members of The Property Ombudsman redress scheme and have Client Money protection with ARLA Propertymark. You can find more information on our website at <https://www.benhams.com/membership/>



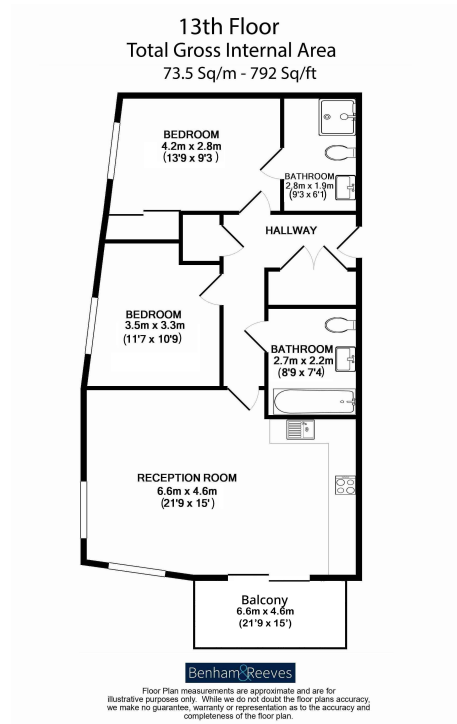
Benham & Reeves



Pinto Tower, Nine Elms, SW8

£842 per week, £3,650 per month + fees

www.benhams.com



Score	Energy rating	Current	Potential
92+	A		
81-91	B		
69-80	C	71 C	72 C
55-68	D		
39-54	E		
21-38	F		
1-20	G		

London branches open six days a week Mon - Sat

Canary Wharf | City | Colindale | Dartmouth Park | Ealing | Fulham
Hammersmith | Hampstead | Highgate | Hyde Park | Kensington | Kew
Knightsbridge | Nine Elms | Shoreditch | Southall | Surrey Quays
Wapping | Wembley | White City | Woolwich

International offices

China | Hong Kong SAR | India | Indonesia | Qatar | Malaysia | Middle East |
Singapore | South Africa | Thailand | Turkey

