



Benham & Reeves

Dartmouth Park Avenue, Dartmouth Park, NW5

£395 per week, £1,712 per month + fees

🛏 1 Bedroom 🚿 1 Bathroom 🛋 Unfurnished

Very spacious and charming light and bright raised ground floor conversion flat. Ideal for professional couples. Moments from Hampstead Heath and walk to Zone 2 Northern Line Underground.

Please [click here](#) for full detail

Property features

Double Bedroom | Large Reception | Modern Kitchen | High Ceilings | Shower Room | EPC-C | Unfurnished | Zone 2 Underground | Close to Amenities | Near Hampstead Heath

For more information about this property,
please call our Highgate branch on

020 8341 2335

Redress & Client Money Protection :

Benham and Reeves are members of The Property Ombudsman redress scheme and have Client Money protection with ARLA Propertymark. You can find more information on our website at <https://www.benhamandreeves.com/membership/>



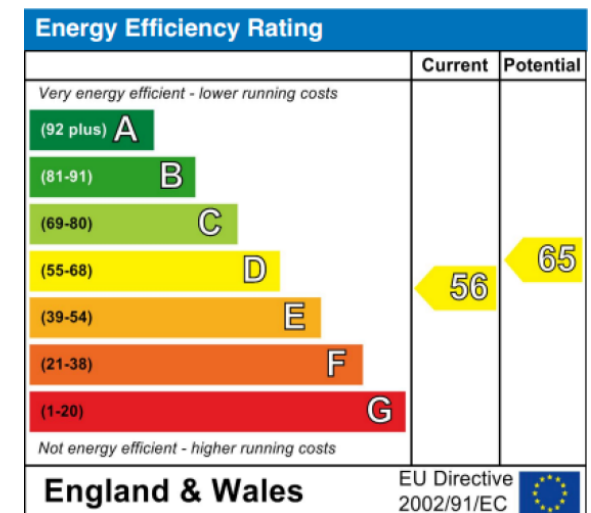
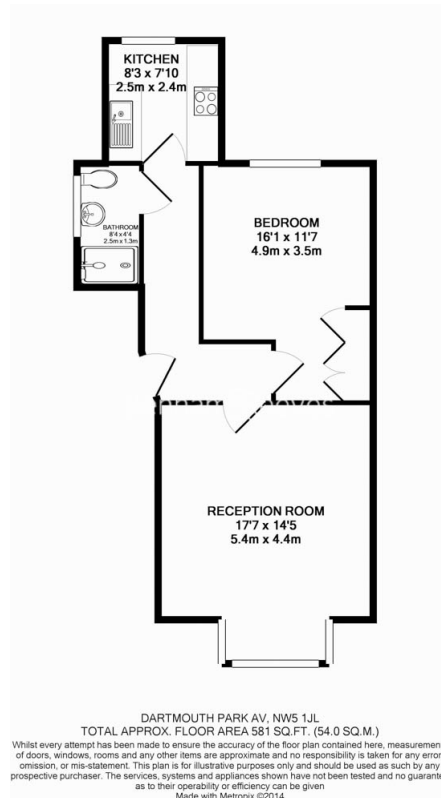
Benham&Reeves



Dartmouth Park Avenue, Dartmouth Park, NW5

£395 per week, £1,712 per month + fees

www.benhams.com



London branches open six days a week Mon - Sat

Canary Wharf | City | Colindale | Dartmouth Park | Ealing | Fulham
Hammersmith | Hampstead | Highgate | Hyde Park | Kensington | Kew
Knightsbridge | Nine Elms | Shoreditch | Southall | Surrey Quays
Wapping | Wembley | White City | Woolwich

International offices

China | Hong Kong SAR | India | Israel | Malaysia | Middle East | Pakistan
Qatar | Singapore | South Africa | Thailand | Turkey



Benham & Reeves